



Parts Manual

Mfg. No: 030852-00
Q6500, 50Hz 6,500 Watt Briggs & Stratton
EMEA Inverter

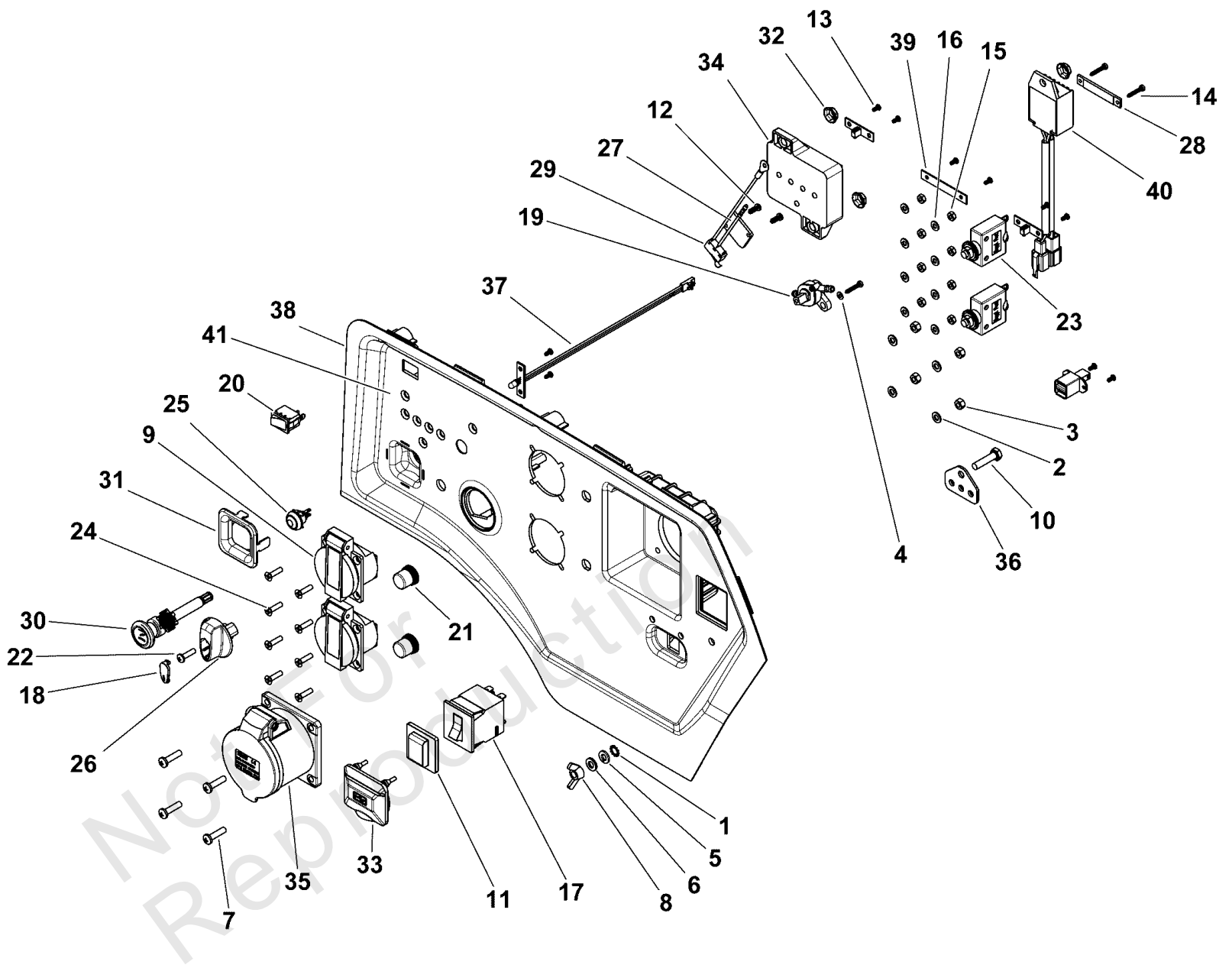
Model Components	Page
Control Panel.....	4
Engine (80102791).....	6
Main Unit.....	10
Wiring Diagram Schematic.....	14
Torque Specification Chart.....	16

Not For
Reproduction

Control Panel

Note: Unless noted otherwise, use the standard torque specifications

Mfg. No: 030852-00



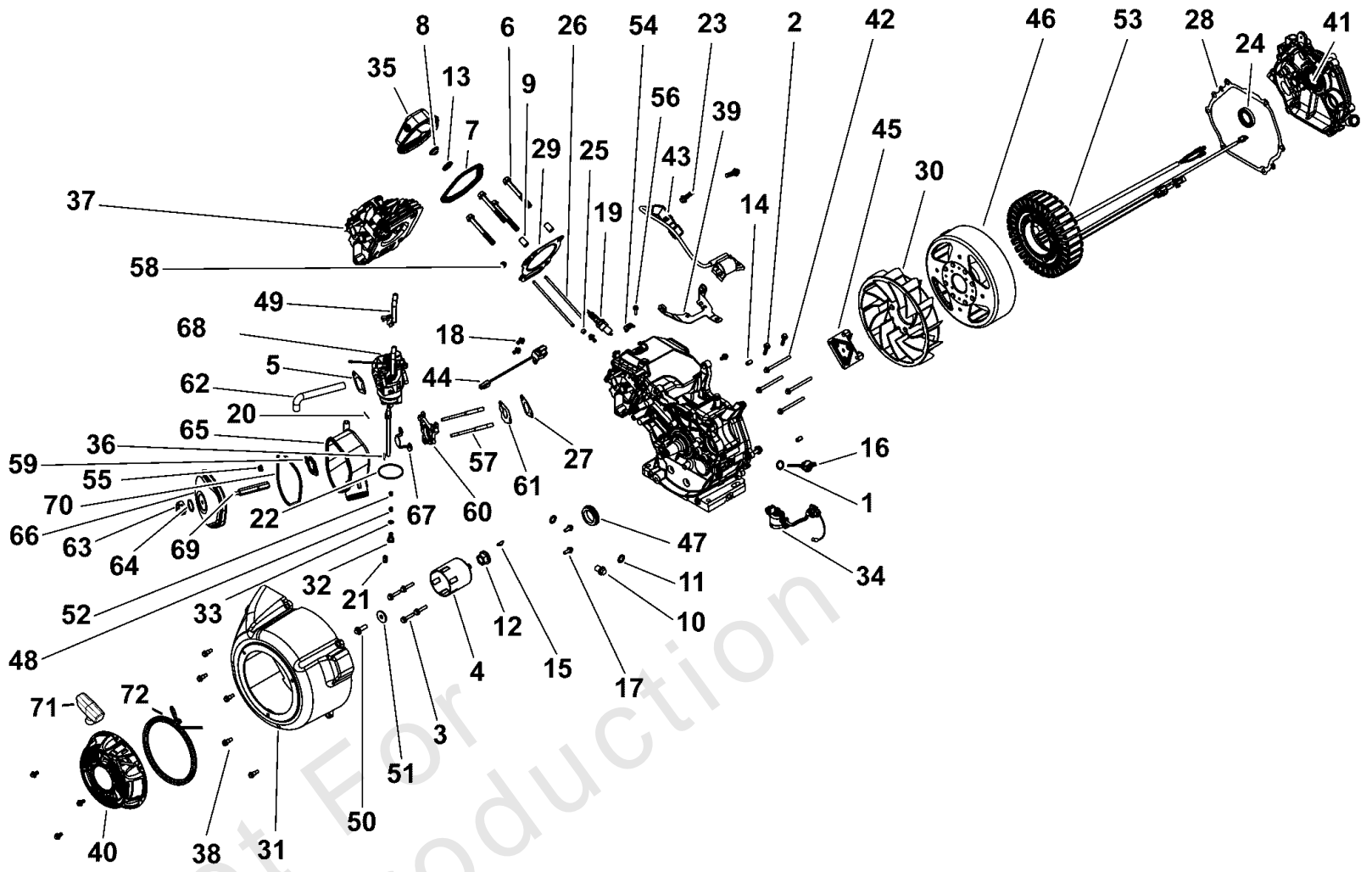
Control Panel

REF NO	PART NO	QTY	DESCRIPTION
1	26850GS	1	WASHER, Ext. M6 - 1/4" Shakeproof
2	51713GS	4	WASHER, M5
3	51716GS	4	NUT, M5 x 0.8
4	-----	1	Washer, M3
5	70005GS	1	WSHR, M6, SS, LOCK
6	1902857	1	Flat washer, M6-12.5 OD
7	75477GS	4	PPHMS, M5 - 0.8 x 20
8	87680GS	1	NUT, M6 - 1.0 Wing
9	84007577	2	AC-SOCKET, 16A, Blue
10	45757GS	1	HHCS, M6 - 1.0 x 25
11	191481GS	1	BOOT, Breaker Circuit
12	84007578	2	SCREW, Thread Forming
13	197958GS	10	SCREW, Tapping, 3 x 6
14	198495GS	3	SCREW, 4 x 18, Tapping
15	84005436	8	NUT
16	84005581	8	WASHER-FLAT
17	209675GS	1	BREAKER-CIRCUIT
18	311377GS	1	COVER, Knob
19	311384GS	1	VALVE, Fuel
20	311442GS	1	SWITCH
21	312636GS	2	BOOT, Circuit Breaker
22	84007579	1	SCREW, PPHMS 8-32 x .625
23	704454	2	BREAKER-CIRCUIT
24	84005584	8	SCREW
25	706558	1	SWITCH-PUSHBUTTON
26	707223	1	KNOB
27	706790	1	COVER
28	771830	1	BRACKET
29	707309	1	SWITCH-MICRO
30	707303	1	CHOKE
31	707225	1	COVER-ROPE
32	771823	3	PUSHNUT
33	772198	1	COVER-USB
34	772201		MODULE
35	84002569	1	OUTLET
36	84002568	1	STUD-GROUNDING
37	84004001	1	LED-REMOTE
38	84007480	1	PANEL, Control
39	84007581	1	BAR, LED, Control Panel
40	84007482	1	HOUSING, Rectifier
41	84007583	1	DECAL, Control Panel
42	707238	1	WIRE-HARNESS,CPNL -(Not Illustrated)
43	707245	1	WIRE-HARNESS, DATA -(Not Illustrated)

Engine (80102791)

Note: Unless noted otherwise, use the standard torque specifications

Mfg. No: 030852-00



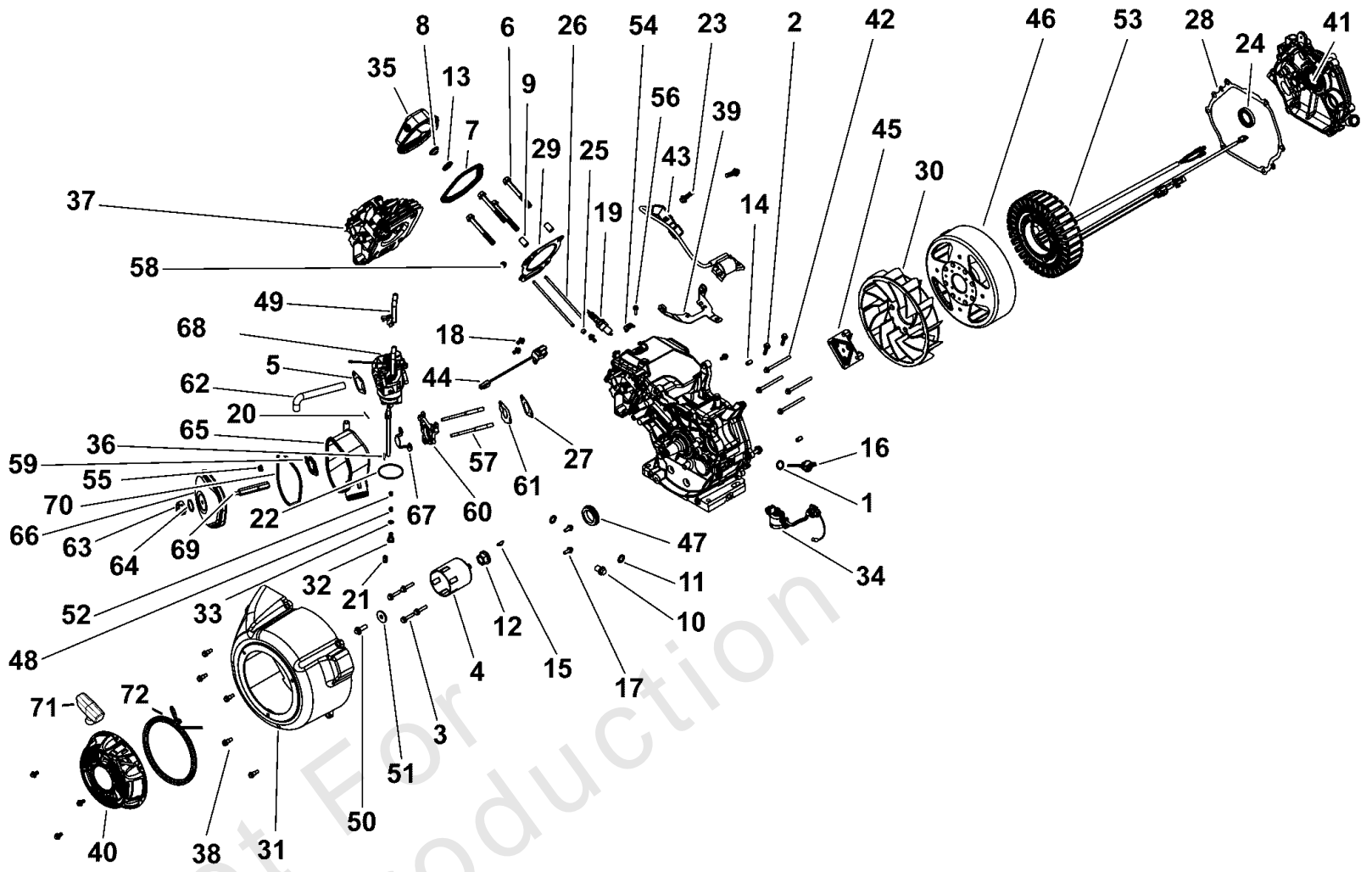
Engine (80102791)

REF NO	PART NO	QTY	DESCRIPTION
1	797327	2	SEAL, O-Ring
2	797655	2	SCREW
3	797656	4	SCREW
4	797746	1	CUP, Flywheel
5	797756	1	GASKET, Air Cleaner
6	797791	4	SCREW
7	797846	1	GASKET, Rocker Cover
8	590987	1	WASHER, Sealing
9	797792	2	PIN, Locating
10	797793	2	PLUG, Oil Drain
11	797794	2	WASHER
12	797811	1	NUT
13	797847	1	WASHER, Sealing
14	797761	2	PIN, Locating
15	797286	1	KEY, Flywheel
16	799941	1	PLUG, Dipstick/Fill
17	798975	2	SCREW
18	798618	8	SCREW
19	798615	1	PLUG, Spark
20	596705	1	KIT, Carburetor Overhaul -(Includes Items 20, 21, 22, 27, 32, 33, 36, 59 & 61)
21	-----	1	SEAT, Inlet -(Included in Item 20)
22	-----	1	GASKET, Float Bowl -(Included in Item 20)
23	590964	2	SCREW
24	591794	1	SEAL, Oil
25	591817	1	CAP-VALVE
26	591818	2	ROD-PUSH
27	591779	1	GASKET, Intake
28	592597	1	GASKET, Crankcase
29	592834	1	GASKET, Cylinder Head
30	596671	1	FAN, Flywheel
31	596687	1	HOUSING, Blower
32	-----	1	SCREW, Bowl Mounting -(Included in Item 20)
33	-----	1	O-RING -(Included in Item 20)
34	797771	1	SENSOR, Oil
35	799778	1	COVER, Rocker
36	-----	1	ASSEMBLY, Needle Fuel Inlet -(Included in Item 20, This Assembly is a Set Containing 2 pcs.)
37	593093	1	HEAD, Cylinder
38	596686	5	SCREW
39	596688	1	BRACKET, Ignition
40	596109	1	STARTER, Rewind
41	84004381	1	COVER, CRANKCASE
42	596694	4	SCREW
43	596107	1	ARMATURE, Magneto
44	596689	1	TRIGGER, Ignition
45	596692	1	PLATE, Cup
46	596691	1	ROTOR ASSEMBLY
47	596658	1	SEAL, Oil

Engine (80102791)

Note: Unless noted otherwise, use the standard torque specifications

Mfg. No: 030852-00



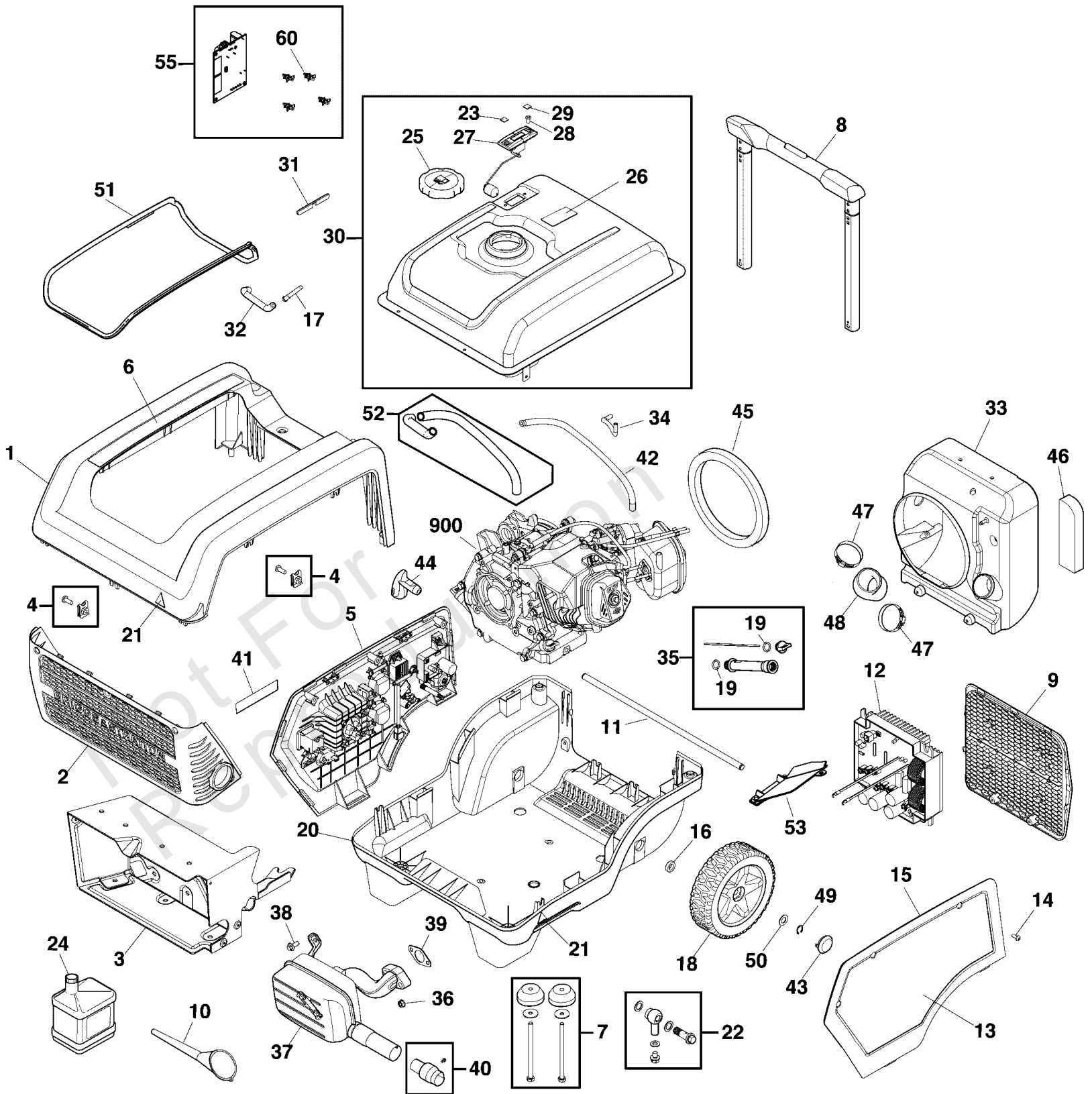
Engine (80102791)

REF NO	PART NO	QTY	DESCRIPTION
48	596704	1	JET, Main
49	596703	1	LEVER, Choke
50	595610	1	SCREW
51	595611	1	WASHER
52	597478	1	JET, Main
53	84007611	1	STATOR ASSEMBLY
54	84007612	1	CLAMP, Casing
55	690939	1	NUT
56	-----	1	* SCREW, Flange, M5 x 16mm
57	797757	2	STUD
58	797854	1	SEAL, Valve
59	799883	1	GASKET, Air Cleaner
60	596702	1	SPACER, Carburetor -(Kit Includes Items 27, 59, 60 & 61)
61	-----	1	GASKET, Carburetor -(Included in Item 60)
62	592353	1	TUBE, Breather
63	596707	1	KNOB, Air Cleaner Cover -(Includes Item 64)
64	596708	1	SEAL-O RING
65	596697	1	BASE, Air Cleaner
66	596699	1	COVER, Air Cleaner
67	596698	1	SHIELD, Carburetor
68	596108	1	CARBURETOR
69	596701	1	STRAP/STUD, Air Cleaner Mounting
70	596105	1	SEAL, Air Cleaner Cover
71	707586	1	HANDLE-STARTER
72	693389	1	ROPE, Starter

Main Unit

Note: Unless noted otherwise, use the standard torque specifications

Mfg. No: 030852-00



Main Unit

REF NO	PART NO	QTY	DESCRIPTION
1	84002562	1	HOUSING-TOP -(Includes Items 6 & 21)
2	706032	1	GRILLE
3	706053	1	HEAT SHIELD
4	705995	1	KIT-NUT
5	REF-80101999	1	Refer to: Control Panel Group
6	84007621	1	DECAL
7	772189	1	MOUNT-VIBRATION
8	706268	1	HANDLE
9	706138	1	GRILL-REAR
10	707650	1	FUNNEL
11	706282	1	AXLE -(Includes Item 49)
12	84002561	1	MODULE-INVERTER
13	84002563	1	DECAL
14	772185	1	SCREW
15	84002566	1	COVER-SIDE -(Includes item 13)
16	705994	2	SPACER
17	707462	1	FILTER
18	706319	2	WHEEL -(Includes Item 43)
19	797327	1	SEAL, O-Ring
20	84002564	1	HOUSING-BOTTOM -(Includes Item 21)
21	315635GS	1	DECAL
22	707460	1	OIL DRAIN
23	313461GS	1	DECAL
24	100005	1	OIL-4 CYCLE 30W 18OZ.
25	319587GS	1	CAP-FUEL
26	84003283	1	DECAL
27	705996	1	GAUGE-FUEL
28	314440GS	2	SCREW
29	313462GS	1	DECAL
30	84007483	1	TANK-Fuel
31	707435	1	SEAL
32	707436	1	HOSE-FUEL
33	84005995	1	HOLDER-INVERTER
34	707456	1	HOSE-VAPOR
35	707461	1	ASSY-OIL FILL
36	590965	2	NUT
37	706317	1	MUFFLER
38	707459	1	BOLT
39	797770	1	GASKET, Exhaust
40	790153	1	ARRESTOR, Spark
41	707458	1	DECAL
42	707457	1	HOSE-FUEL
43	771637	2	HUBCAP
44	707586	1	HANDLE-STARTER
45	707640	1	SEAL-FOAM

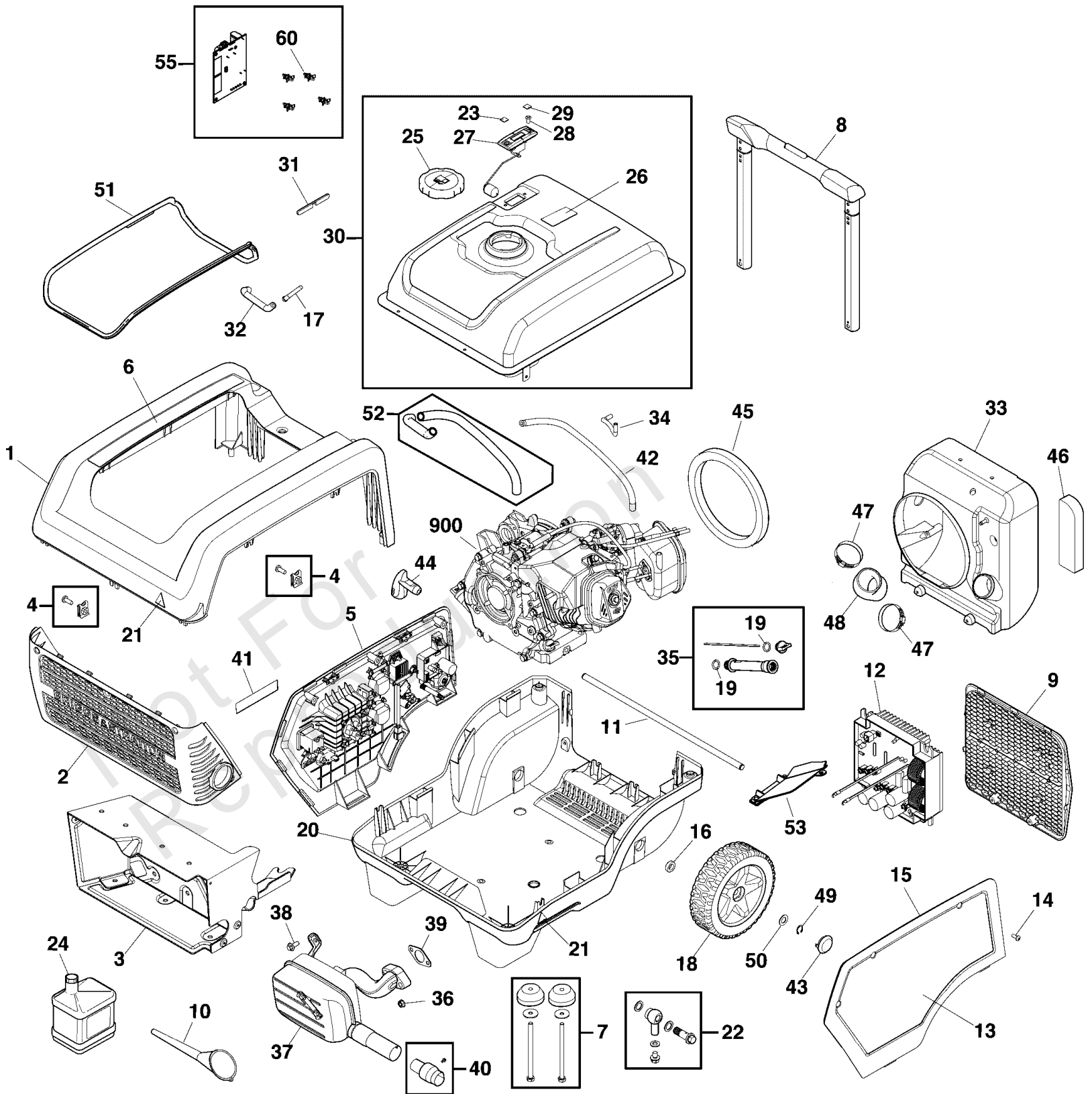
Footnotes:

(Note: To verify your specific engine model, please reference the ID Tag located on your engine.) (Refer to your local Briggs & Stratton distributor for parts and service.)

Main Unit

Note: Unless noted otherwise, use the standard torque specifications

Mfg. No: 030852-00



Main Unit

REF NO	PART NO	QTY	DESCRIPTION
46	596106	1	AIR FILTER
47	771591	2	CLAMP
48	596700	1	TUBE-AIR INTAKE
49	771593	2	E-RING
50	771592	2	WASHER
51	84007485	1	GASKET, Fuel Tank
52	84007616	1	KIT, Insulated Pipe
53	84007622	1	HEATSHIELD, Exhaust
55	84004007	1	MODULE-CO -(Includes Item 60)
60	84007630	1	KIT, Module Support -(Includes Qty. 4)
900	80102791		**ENGINE

Not For
Reproduction

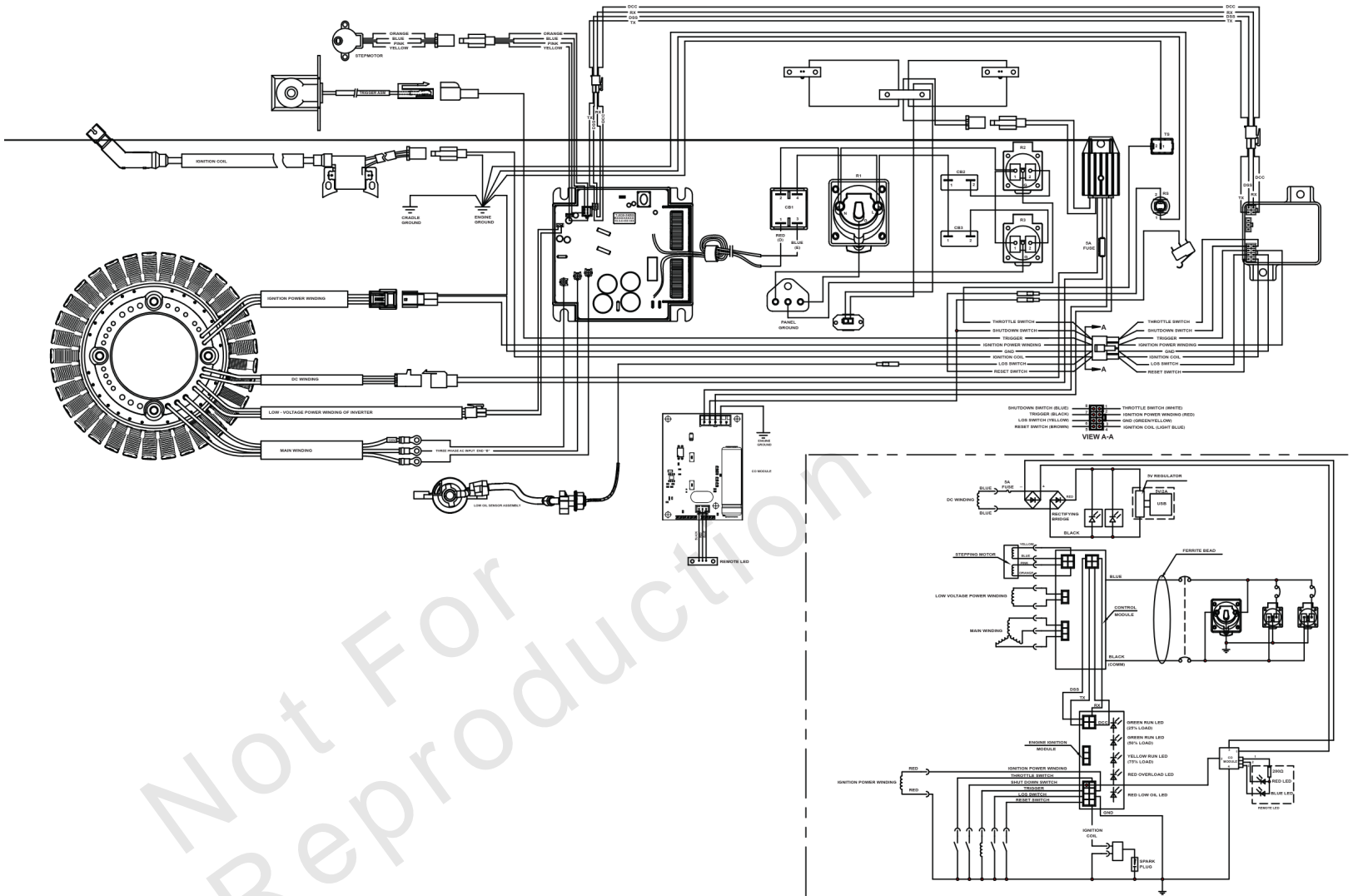
Footnotes:

(Note: To verify your specific engine model, please reference the ID Tag located on your engine.) (Refer to your local Briggs & Stratton distributor for parts and service.)

Wiring Diagram Schematic

Note: Unless noted otherwise, use the standard torque specifications

Mfg. No: 030852-00



Wiring Diagram Schematic

REF NO	PART NO	QTY	DESCRIPTION
--	-----		Wiring Diagram Only
--	-----		WARNING - Generator Voltage Could Cause Electrical Shock or Burn Resulting in Death Or Serious Injury. To Avoid Electrical Shock Or Burn Hazard, Please Refer Service To Qualified Personnel.

Not For Reproduction

Hardware Identification & Torque Specifications

Torque Specification Chart								
FOR STANDARD METRIC MACHINE HARDWARE (Tolerance ± 20%)								
Property Class	5.6		8.8		10.9		12.9	
	Class 5.6		Class 8.8		Class 10.9		Class 12.9	
Size Of Hardware	in/lbs	Nm.	in/lbs	Nm.	in/lbs	Nm.	in/lbs	Nm.
	ft/lbs		ft/lbs		ft/lbs		ft/lbs	
M3	5.88	.56	13.44	1.28	19.2	1.80	22.92	2.15
M4	13.44	1.28	30.72	2.90	43.44	4.10	52.56	4.95
M5	26.4	2.50	60.96	5.75	5.97	8.10	7.15	9.7
M6	44.64	4.3	7.3	9.9	10.3	14	12.1	16.5
M7	5.2	7.1	12.1	16.5	16.9	23	19.9	27
M8	7.7	10.5	17.7	24	25	34	29	40
M10	15	21	35	48	50	67	59	81
M12	26	36	61	83	86.2	117	103	140
M14	42	58	101	132	136	185	162	220
M16	64	88	147	200	210	285	250	340
M18	89	121	202	275	287	390	346	470
M20	126	171	290	390	405	550	486	660
M22	169	230	390	530	559	745	656	890
M24	217	295	497	375	708	960	840	1140
M27	320	435	733	995	1032	1400	1239	1680
M30	435	590	995	1350	1401	1900	1681	2280
M33	590	800	1349	1830	1902	2580	2278	3090
M36	759	1030	1740	2360	2441	3310	2935	3980
M39	988	1340	2249	3050	3163	4290	3798	5150

Torque Specification Chart						
FOR STANDARD MACHINE HARDWARE (Tolerance ± 20%)						
Hardware Grade	No Marks		SAE Grade 5		SAE Grade 8	
	SAE Grade 2		SAE Grade 5		SAE Grade 8	
Size Of Hardware	in/lbs	Nm.	in/lbs	Nm.	in/lbs	Nm.
	ft/lbs		ft/lbs		ft/lbs	
8-32	19	2.1	30	3.4	41	4.6
8-36	20	2.3	31	3.5	43	4.9
10-24	27	3.1	43	4.9	60	6.8
10-32	31	3.5	49	5.5	68	7.7
1/4-20	66	7.6	8	10.9	12	16.3
1/4-28	76	8.6	10	13.6	14	19.0
5/16-18	11	15.0	17	23.1	25	34.0
5/16-24	12	16.3	19	25.8	29	34.0
3/8-16	20	27.2	30	40.8	45	61.2
3/8-24	23	31.3	35	47.6	50	68.0
7/16-14	30	40.8	50	68.0	70	95.2
7/16-20	35	47.6	55	74.8	80	108.8
1/2-13	50	68.0	75	102.0	110	149.6
1/2-20	55	74.8	90	122.4	120	163.2
9/16-12	65	88.4	110	149.6	150	204.0
9/16-18	75	102.0	120	163.2	170	231.2
5/8-11	90	122.4	150	204.0	220	299.2
5/8-18	100	136	180	244.8	240	326.4
3/4-10	160	217.6	260	353.6	386	525.0
3/4-16	180	244.8	300	408.0	420	571.2
7/8-9	140	190.4	400	544.0	600	816.0
7/8-14	155	210.8	440	598.4	660	897.6
1-8	220	299.2	580	788.8	900	1,244.0
1-12	240	326.4	640	870.4	1,000	1,360.0

The guides and ruler furnished below are designed to help you select the appropriate hardware.



Nut, M8

Thread Diameter (mm)

Inside Diameter (in) Threads per inch

Nut, 1/2-16



Screw, M8- 1.25 x 25

Thread Diameter (mm) Distance between threads (mm) Body Length (mm)

Body Diameter Threads per inch Body Length (in)

Screw, 1/2- 16 x 2



Standard Hardware Sizing

When a washer or nut is identified as 1/2" (M8), this is the *Nominal size*, meaning the *inside diameter* is 1/2 inch (8mm metric thread diameter); if a second number is present it represents the *threads per inch* (distance between threads).

When bolt or capscrew is identified as 1/2 - 16 x 2" (M8 - 1.25 x 50), this means the *Nominal size*, or body diameter is 1/2 inch (8mm metric thread diameter), the second number, 16, represents the *threads per inch*, (*distance between threads*). The final number is the body length of the bolt or screw, 2 inches (50mm).

NOTES

- These torque values are to be used for all hardware excluding: locknuts, self-tapping screws, thread forming screws, sheet metal screws and socket head setscrews.
- Recommended seating torque values for locknuts:
 - for prevailing torque locknuts - use 65% of grade 5 torques.
 - for flange whizlock nuts and screws - use 135% of grade 5 torques.
- Unless otherwise noted on assembly drawings, all torque values must meet this specification.

Common Hardware Types

Hex Head Capscrew



Washer



Carriage Bolt



Hex Nut

Wrench & Fastener Size Guide

1/4" Bolt or Nut Wrench—7/16"	5/16" Bolt or Nut Wrench—1/2"	3/8" Bolt or Nut Wrench—9/16"	7/16" Bolt or Nut Wrench (Bolt)—5/8" Wrench (Nut)—11/16"	1/2" Bolt or Nut Wrench—3/4"
M6 Bolt or Nut Wrench—10mm	M8 Bolt or Nut Wrench—13mm	M10 Bolt or Nut Wrench—17mm	M12 Bolt or Nut Wrench—19mm	M14 Bolt or Nut Wrench—22mm

