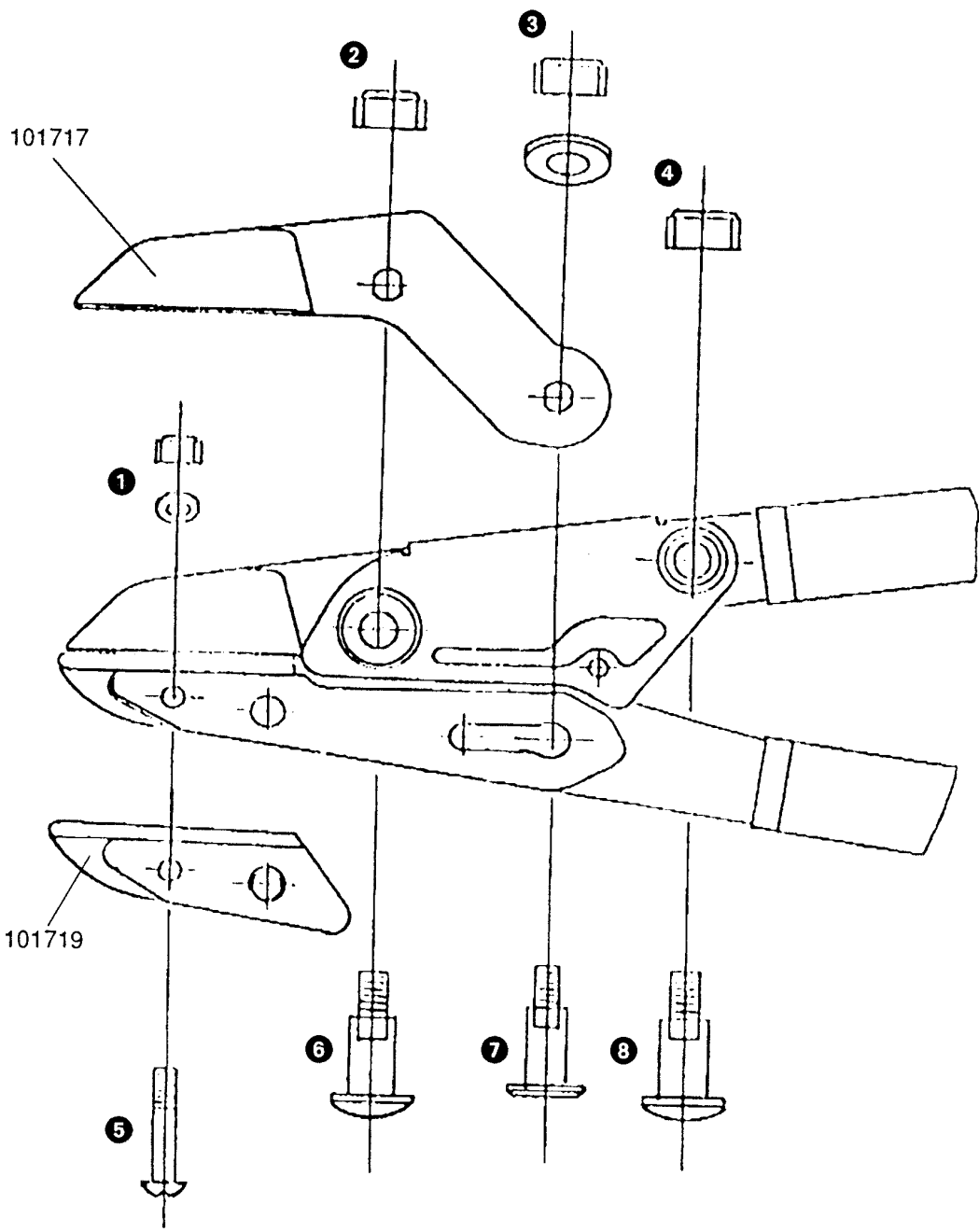
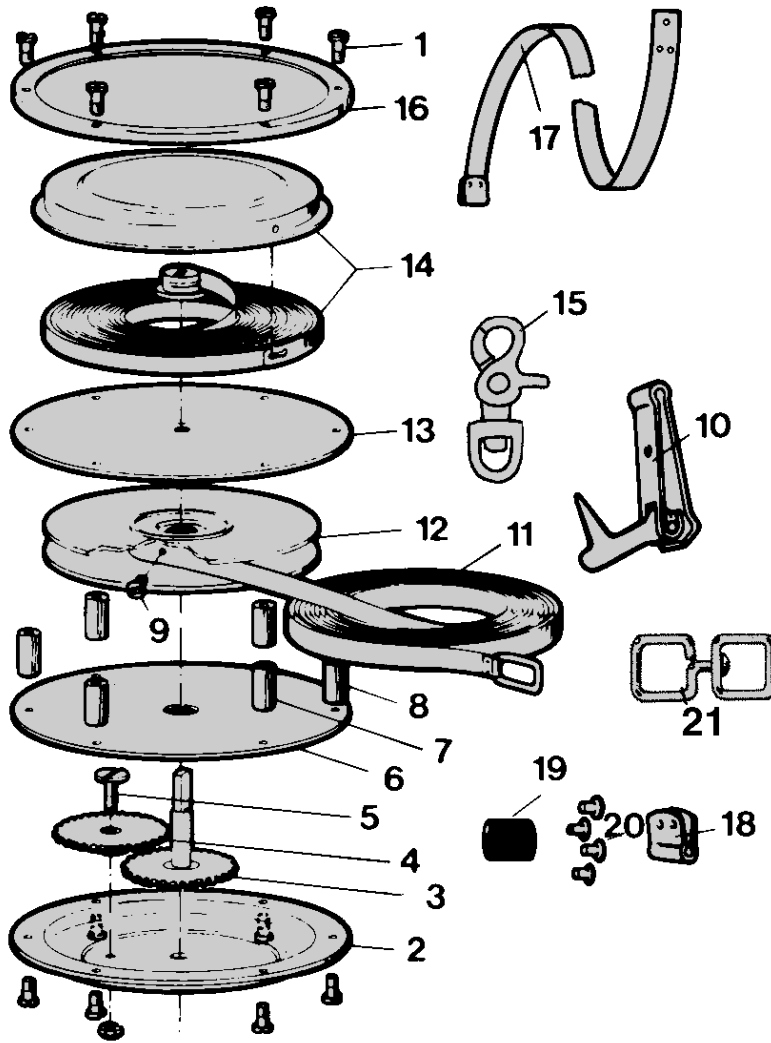


- 1 + 5 = 101715
- 2 + 6 = 101737
- 3 + 8 = 101715
- 4 + 7 = 101737

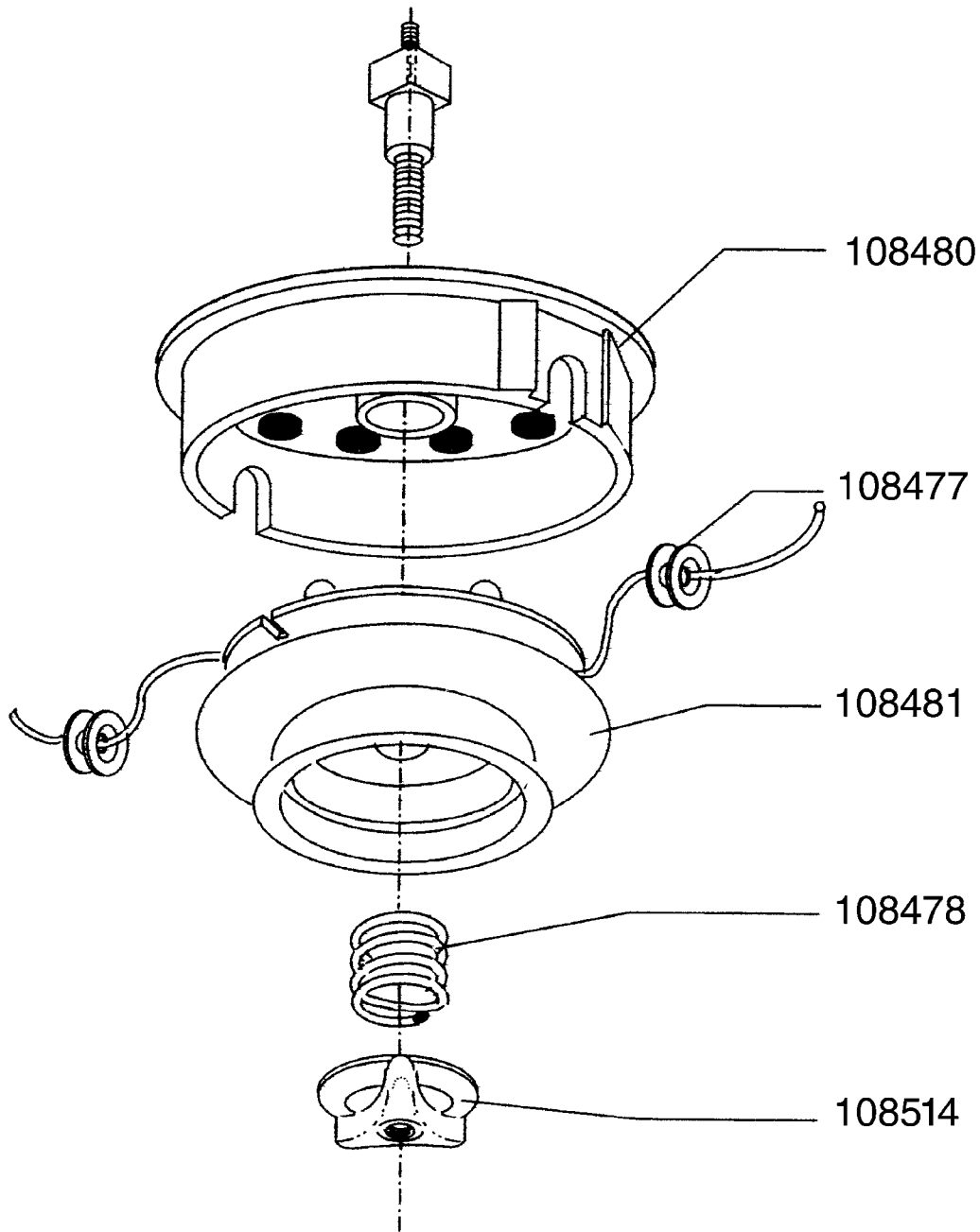


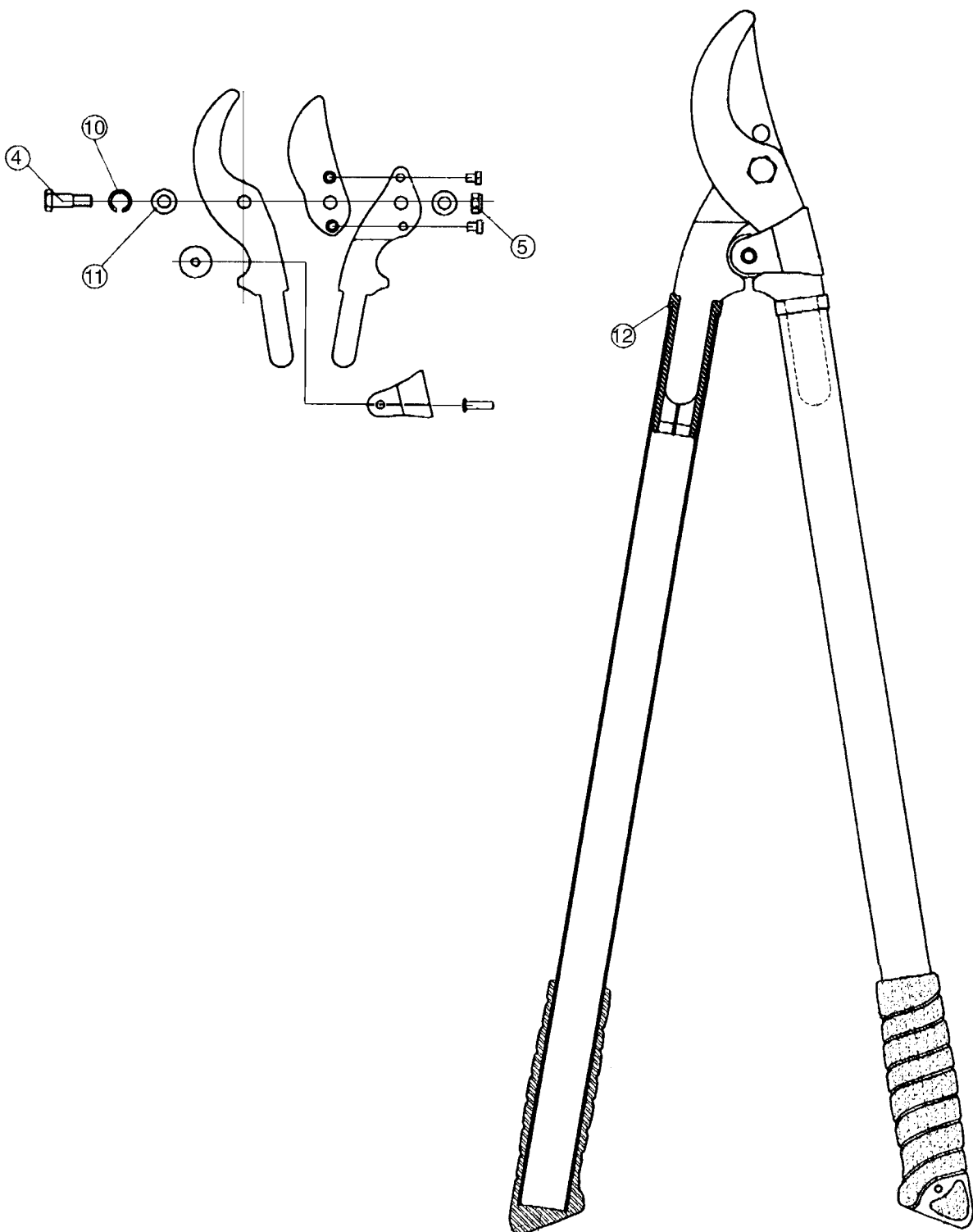
- 1 + 5 = 101720
- 2 + 6 = 101715
- 3 + 7 = 101738
- 4 + 8 = 101715

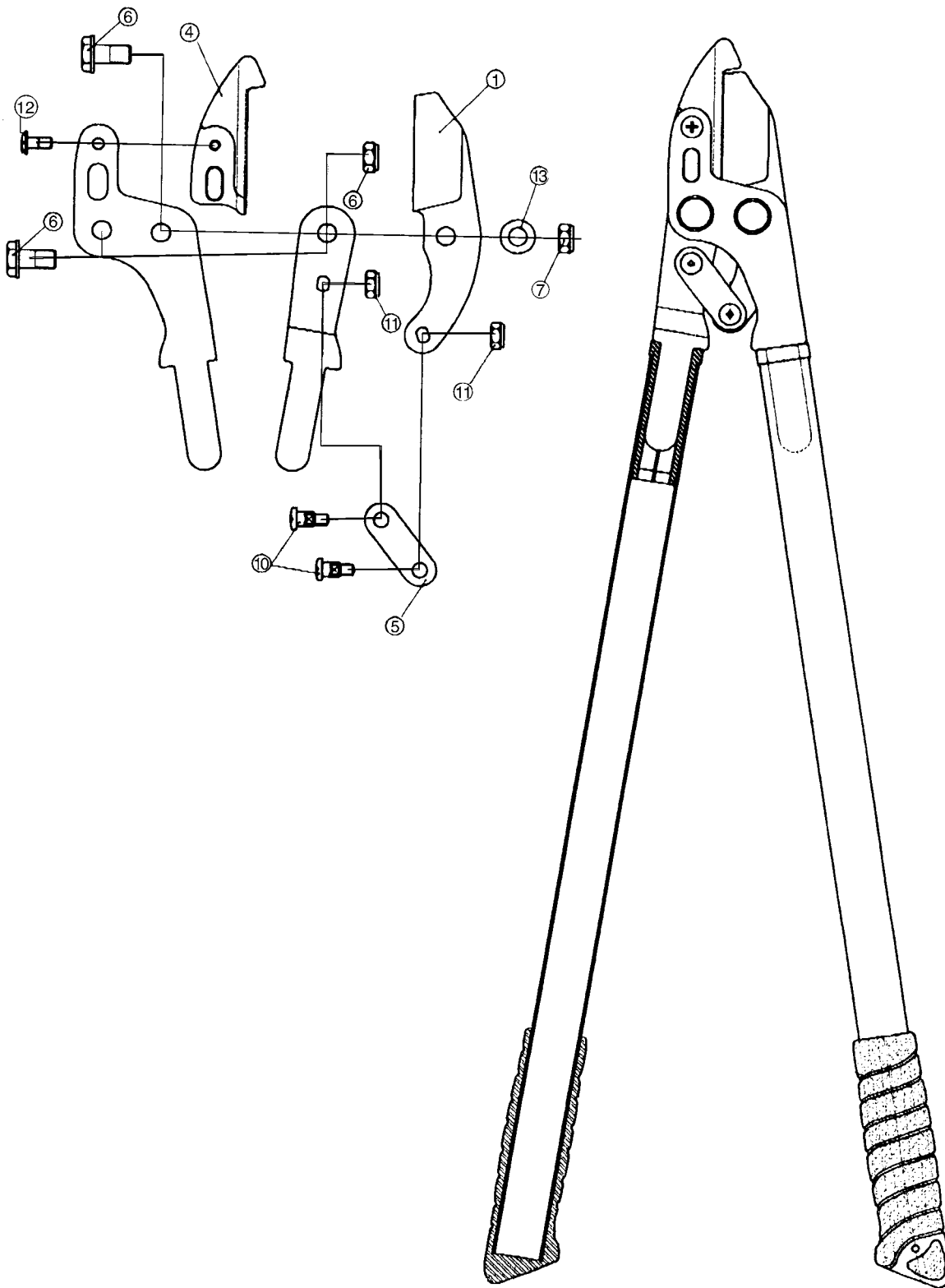
- P/N 106510
- P/N 106511
- P/N 106512
- P/N 106513



LOGGER'S TAPE PART NUMBER	P/N 106510	P/N 106511	P/N 106512	P/N 106513
Parts description	15m	50'/15m	20m	25m
1. Post screw	106482	106482	106482	106482
2. Gear housing with bearing	106473	106473	106473	106474
3. Main shaft and gear	106477	106477	106477	106477
4. Idler gear and pinion	106478	106478	106478	106478
5. Idler bearing with screw,nut	106479	106479	106479	106479
6. Gear cover plate	106466	106466	106466	106467
7. Nylon guide post with screws	106480	106480	106480	106480
8. Spacer post with 2 screws	106495	106495	106495	106495
9. Tape refill screw	106483	106483	106483	106483
10. Release hook	106492	106492	106492	106492
11. Tape refill blade with release hook	106459	106497	106461	106463
12. Spool with pinion gear	106475	106475	106475	106476
13. Spring cover plate with bearing	106468	106468	106468	106469
14. Spring assembly complete	106515	106515	106515	106516
15. Hanger and swivel clip	106494	106494	106494	106494
16. Locking ring	106464	106464	106464	106465
17. 1/2 metre plastic end	106499	106499	106499	106499
1 metre plastic end	106500	106500	106500	106500
18. Hinge	106484	106484	106484	106484
19. Rubber stop	106486	106486	106486	106486
20. Extra long eyelets (500-pack)	106488	106488	106488	106488
Not illustrated:				
Tape repair end 19" with release hook	106489	106489	106489	106489
25 metre bulk leader tape	106490	106490	106490	106490



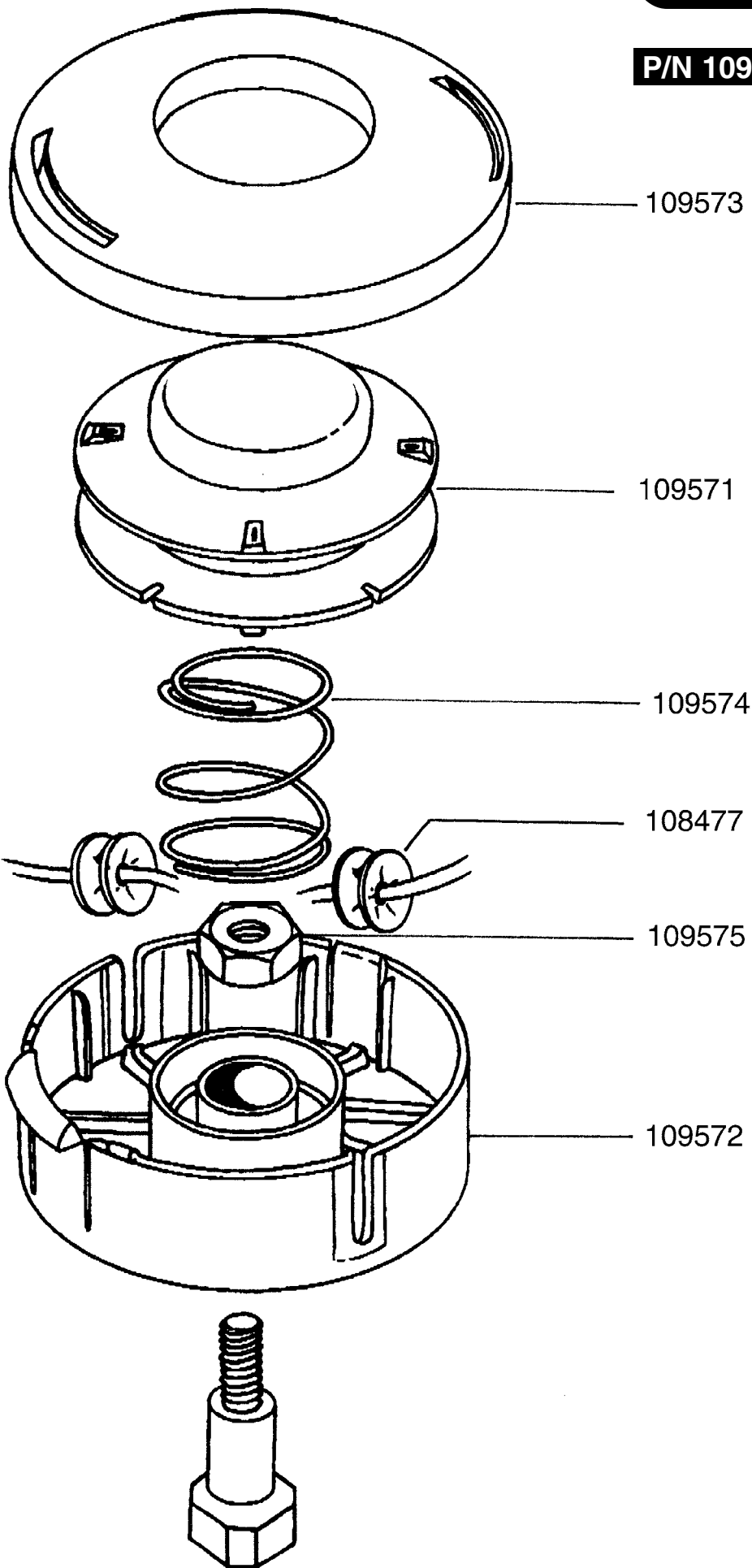


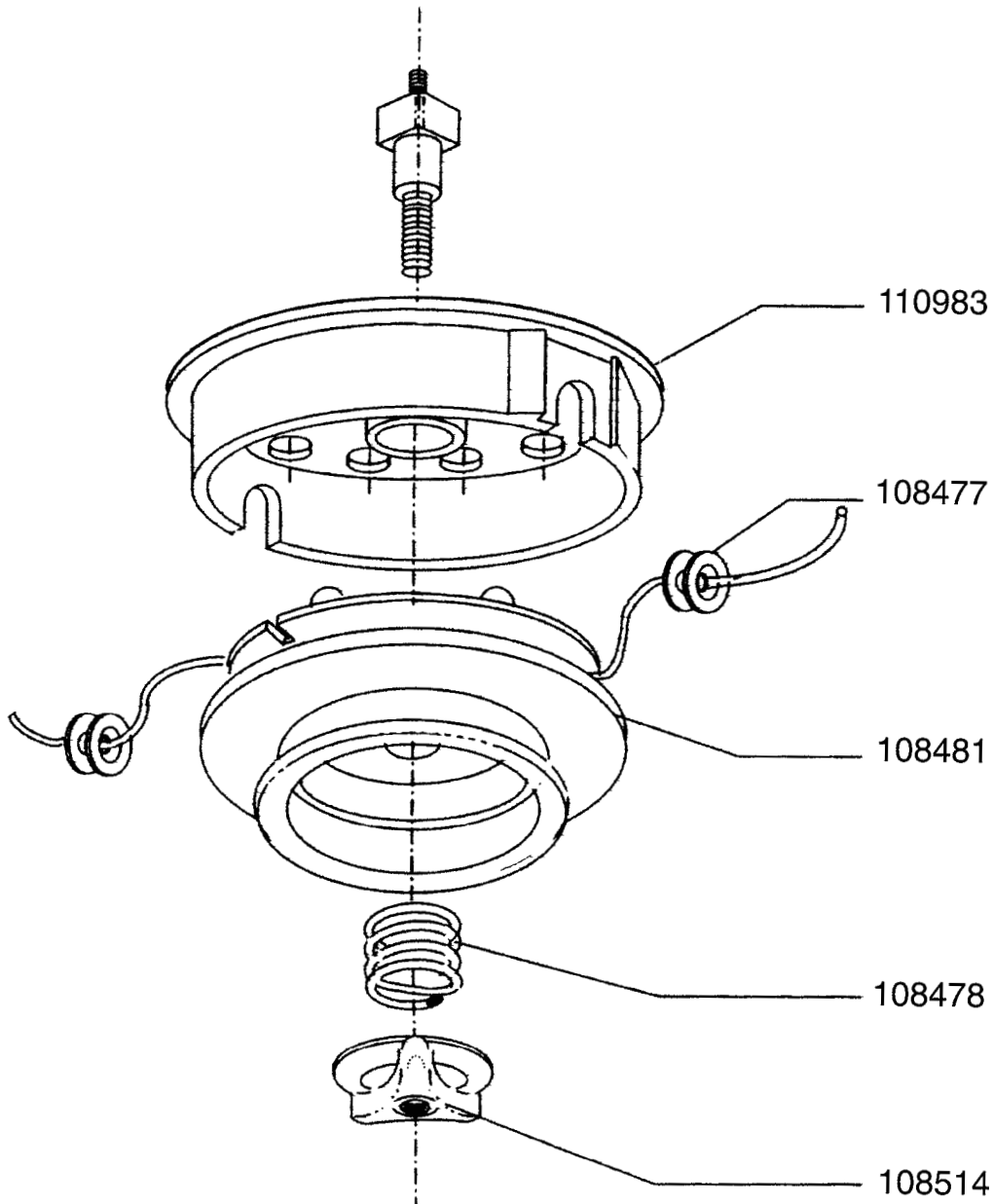


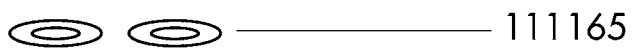
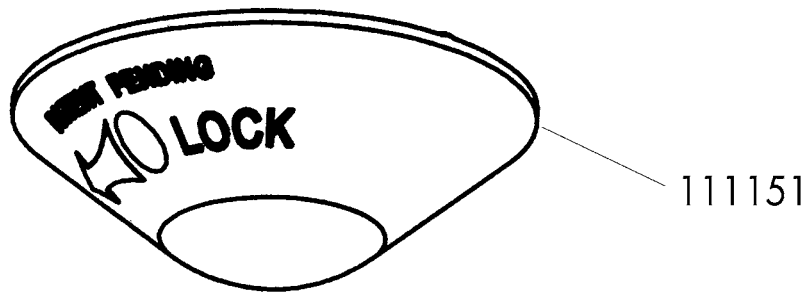
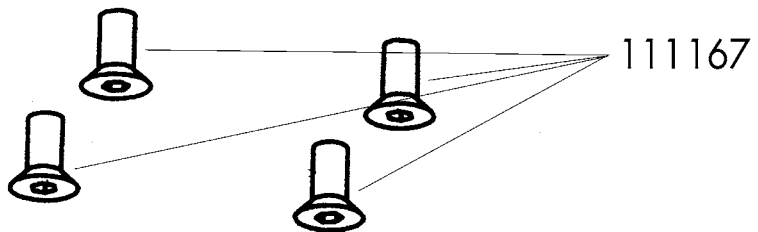
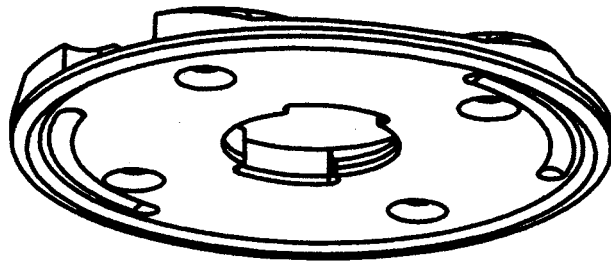
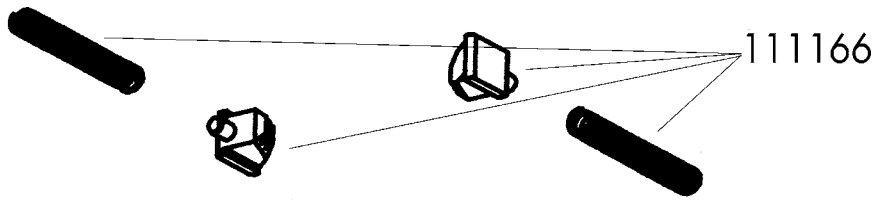
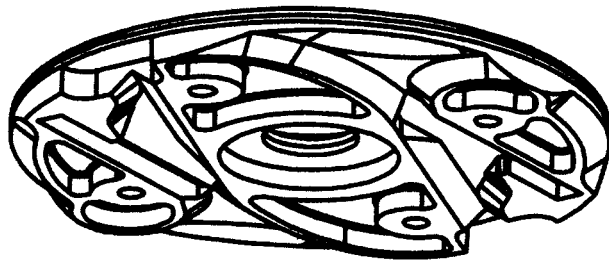
109526	6+7+13
109527	4+12
109528	1
109529	5+10+11

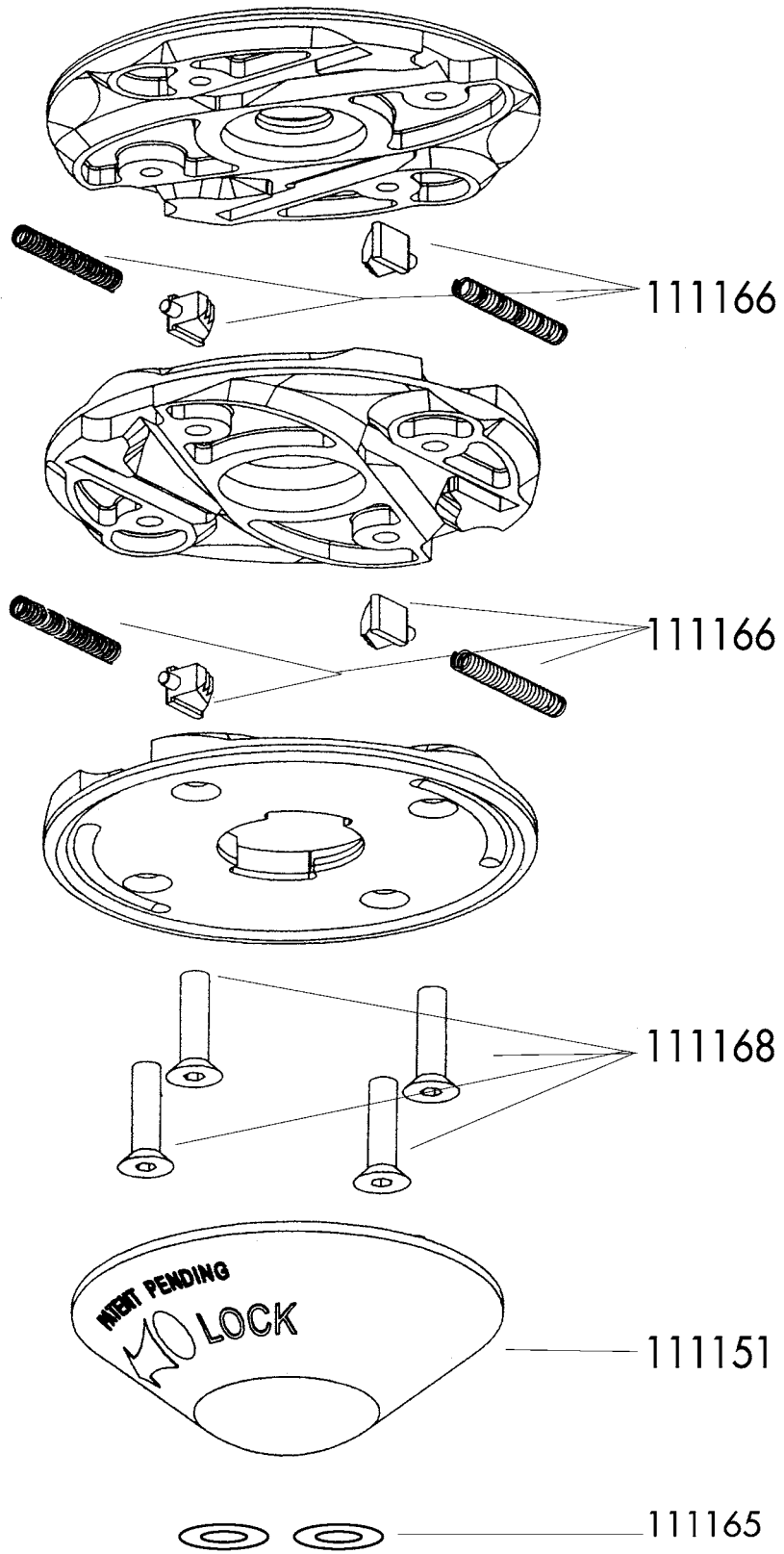


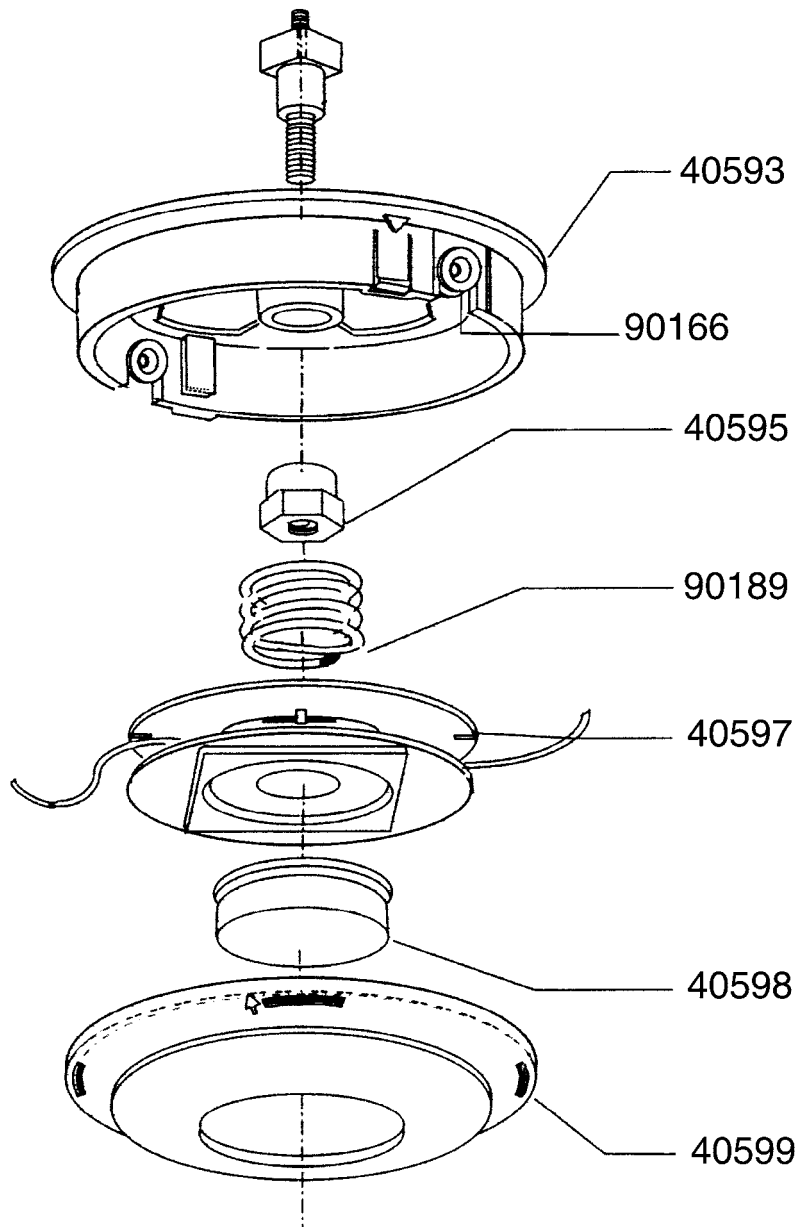
P/N 109525A

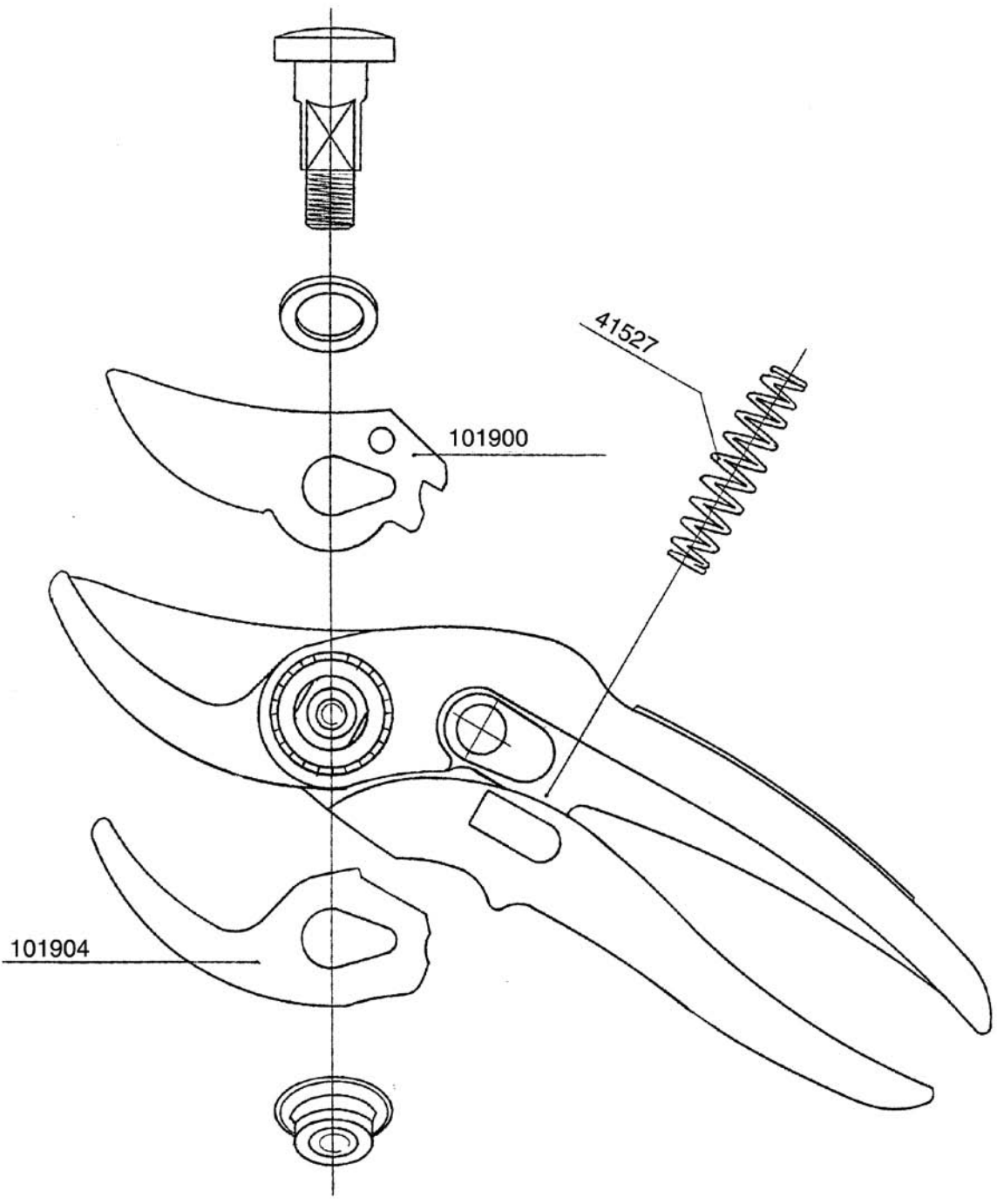


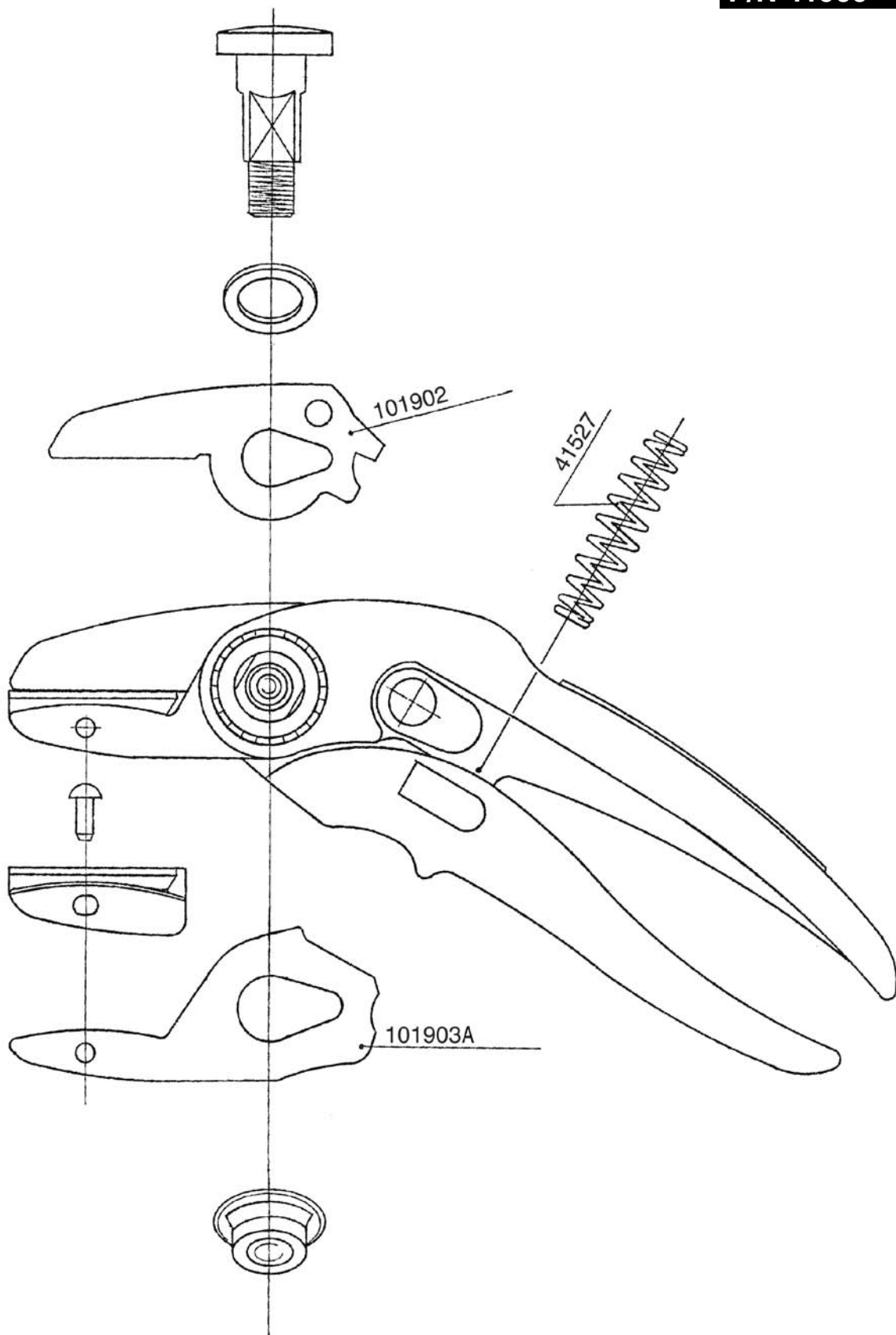


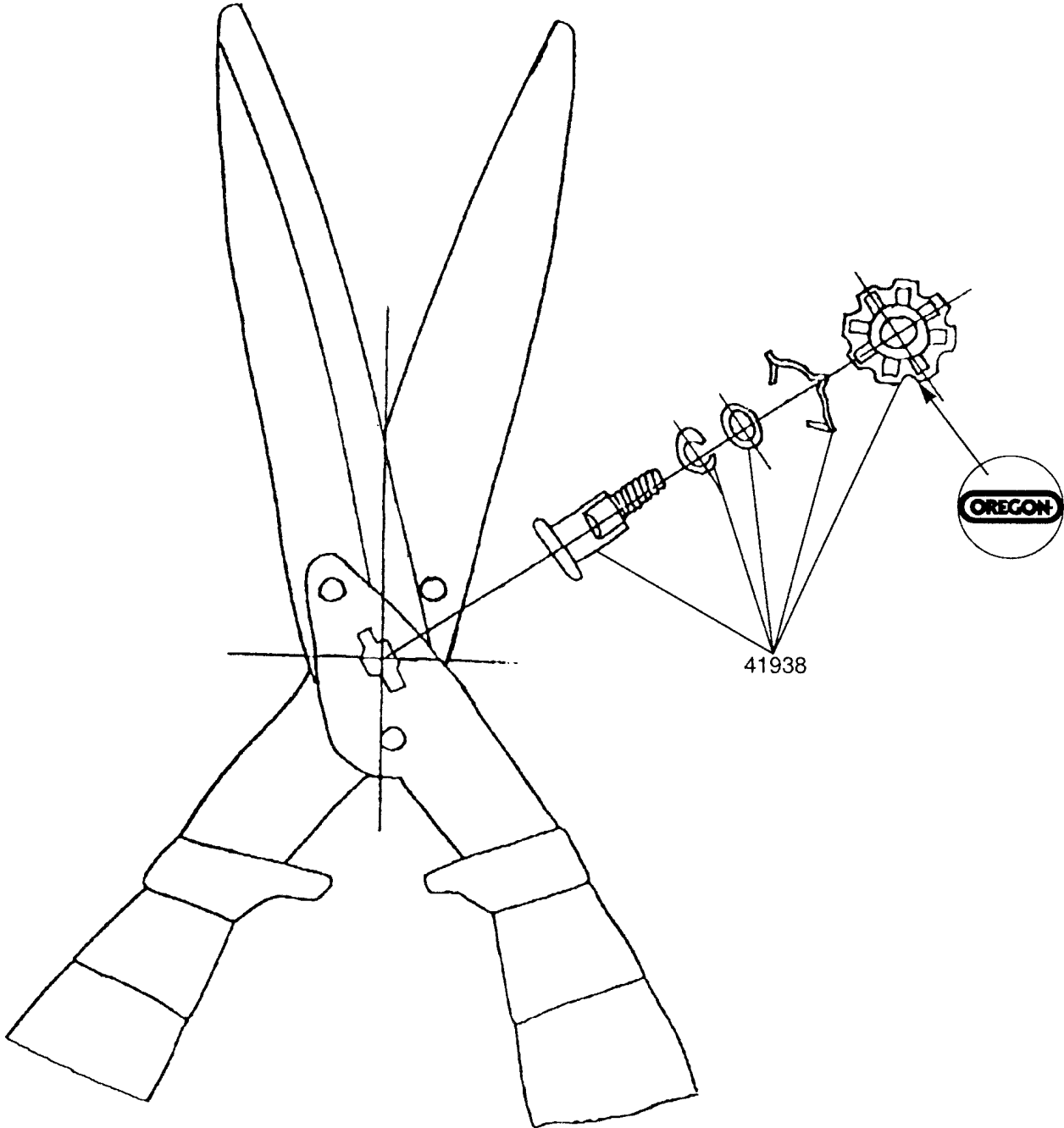


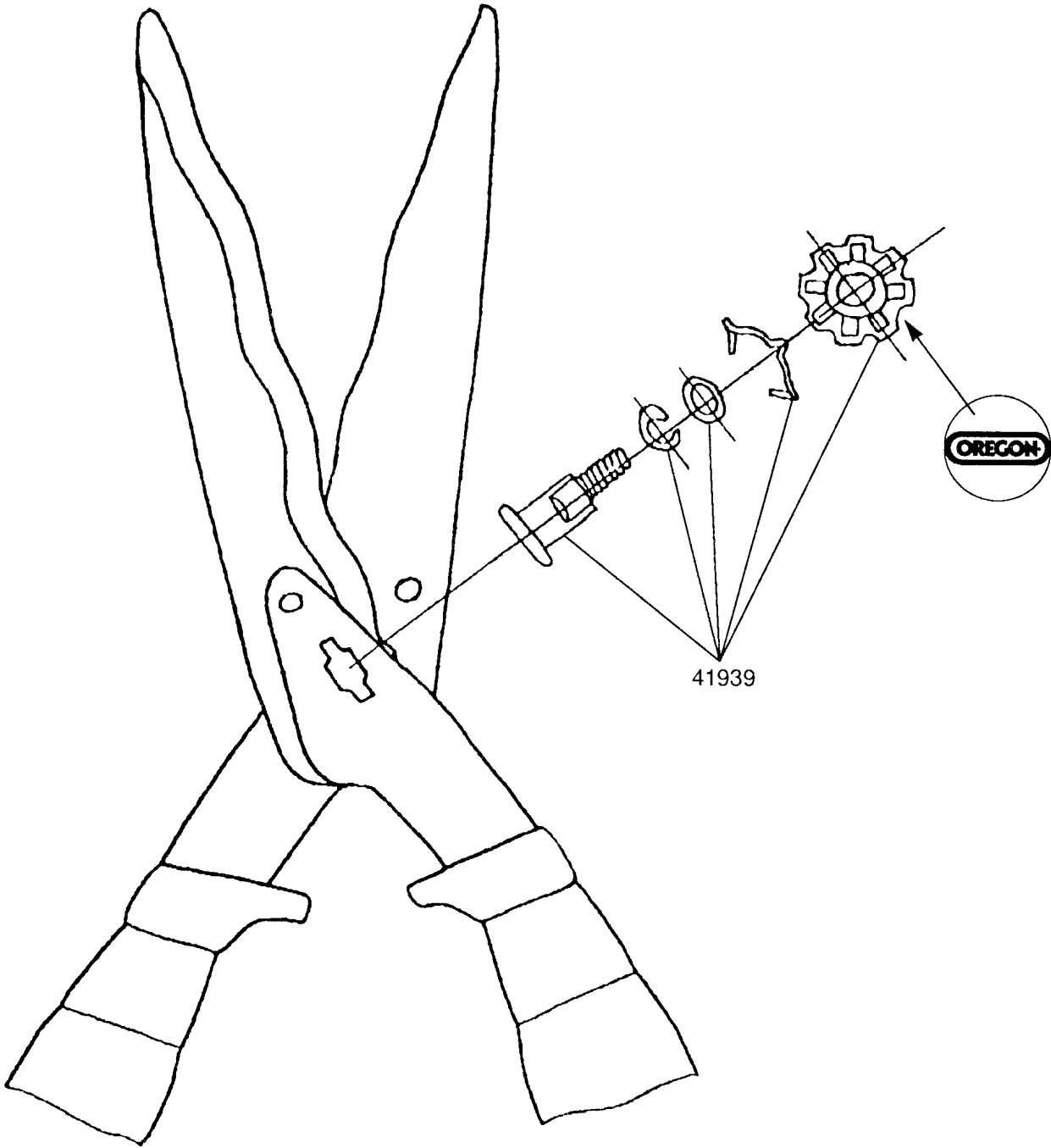


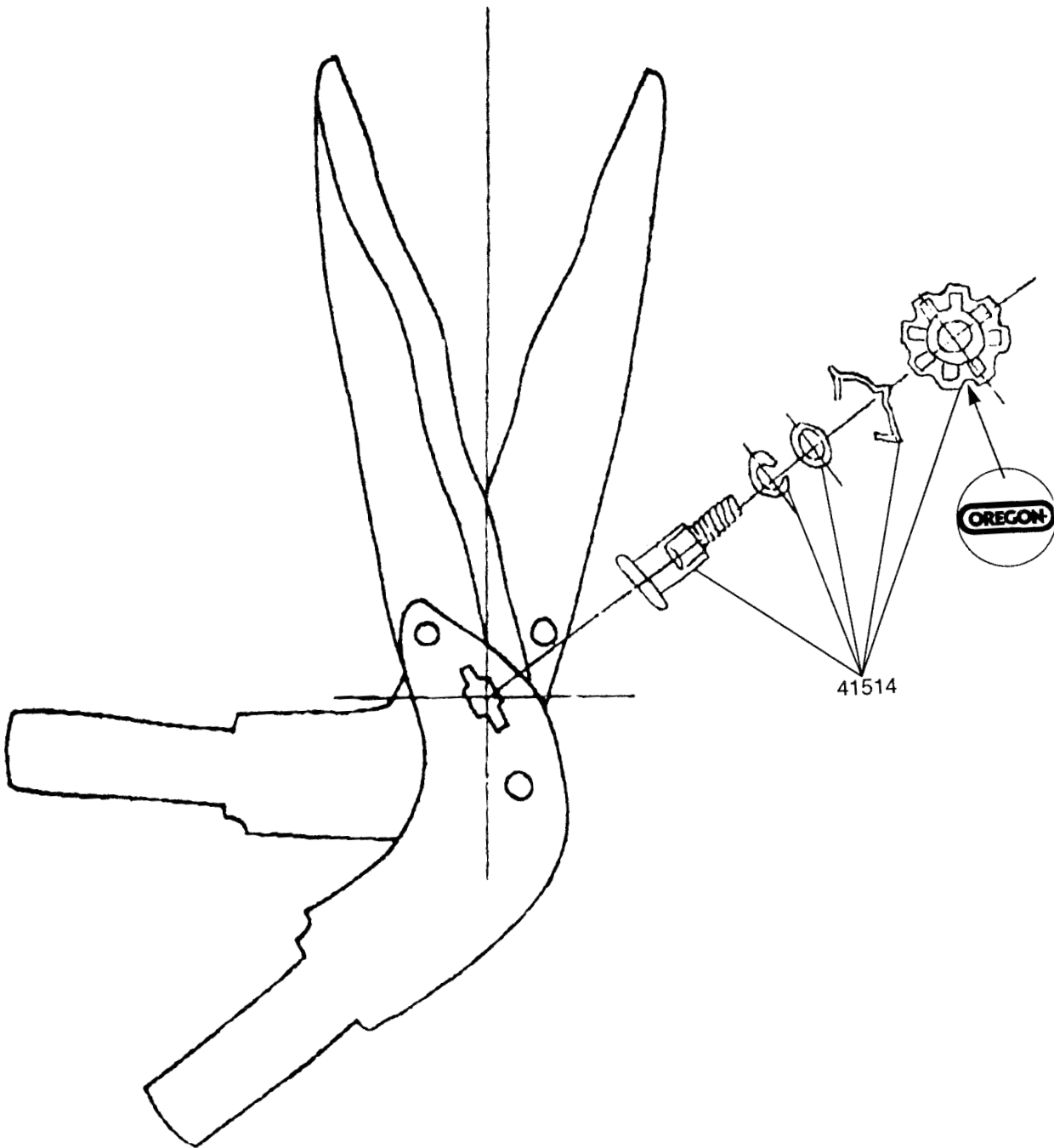


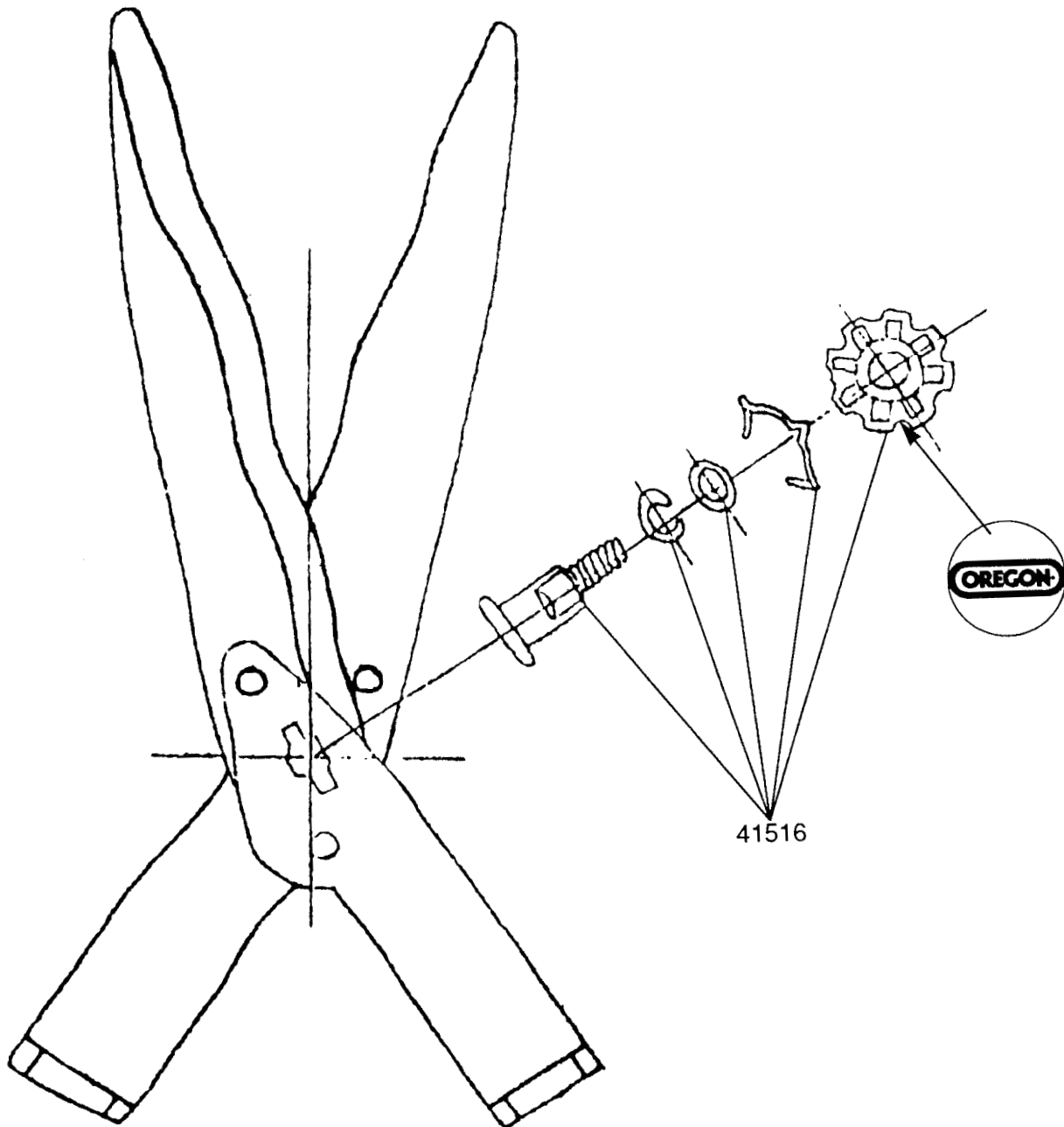


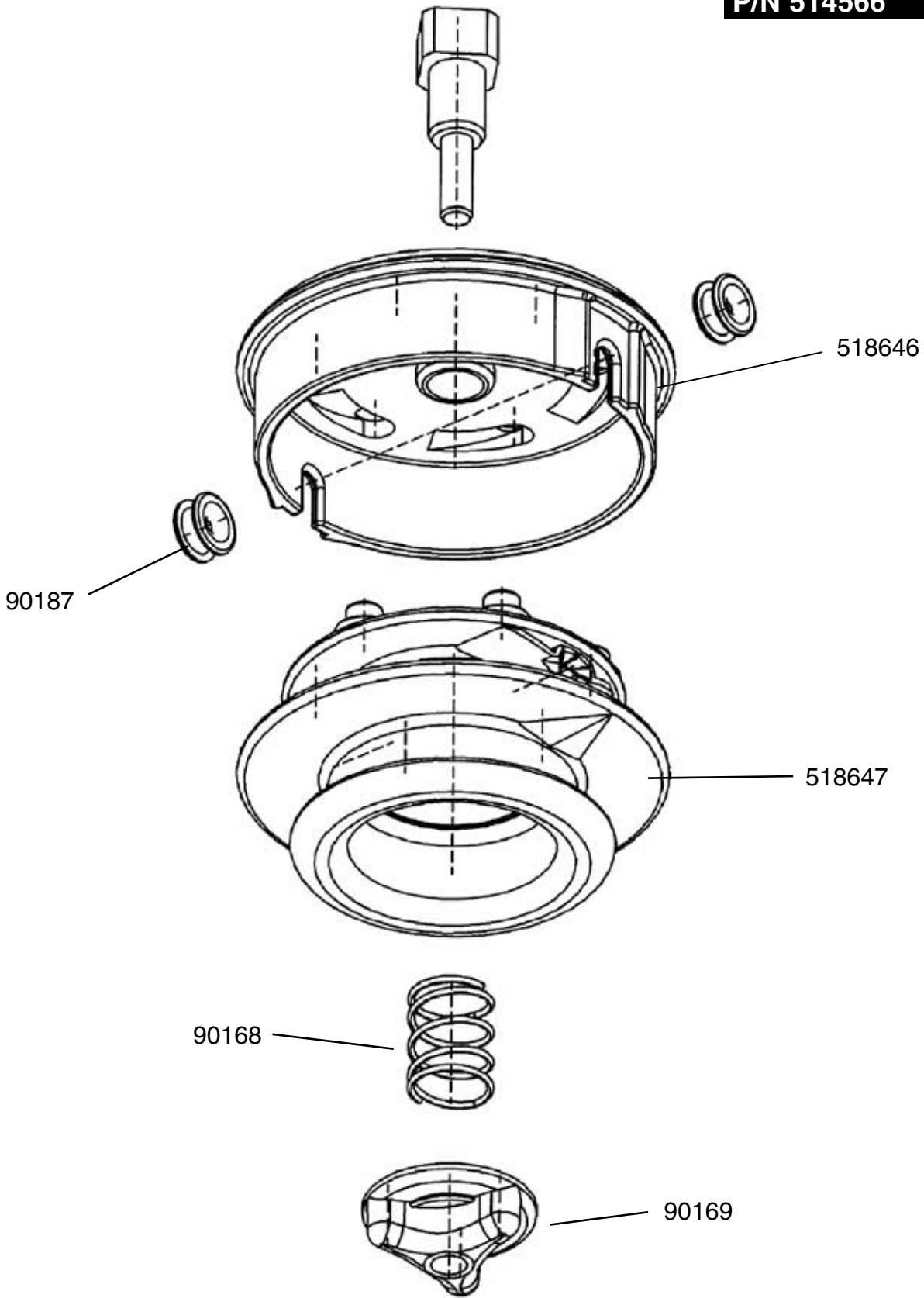




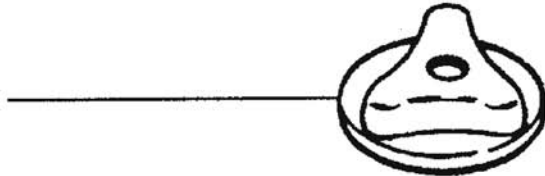




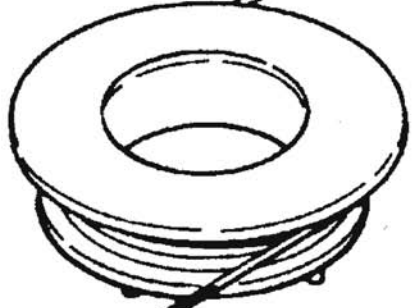
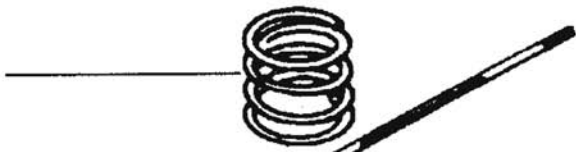




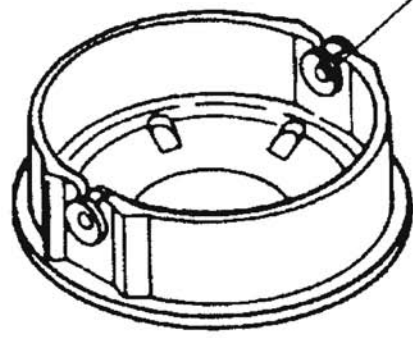
90169
90169R

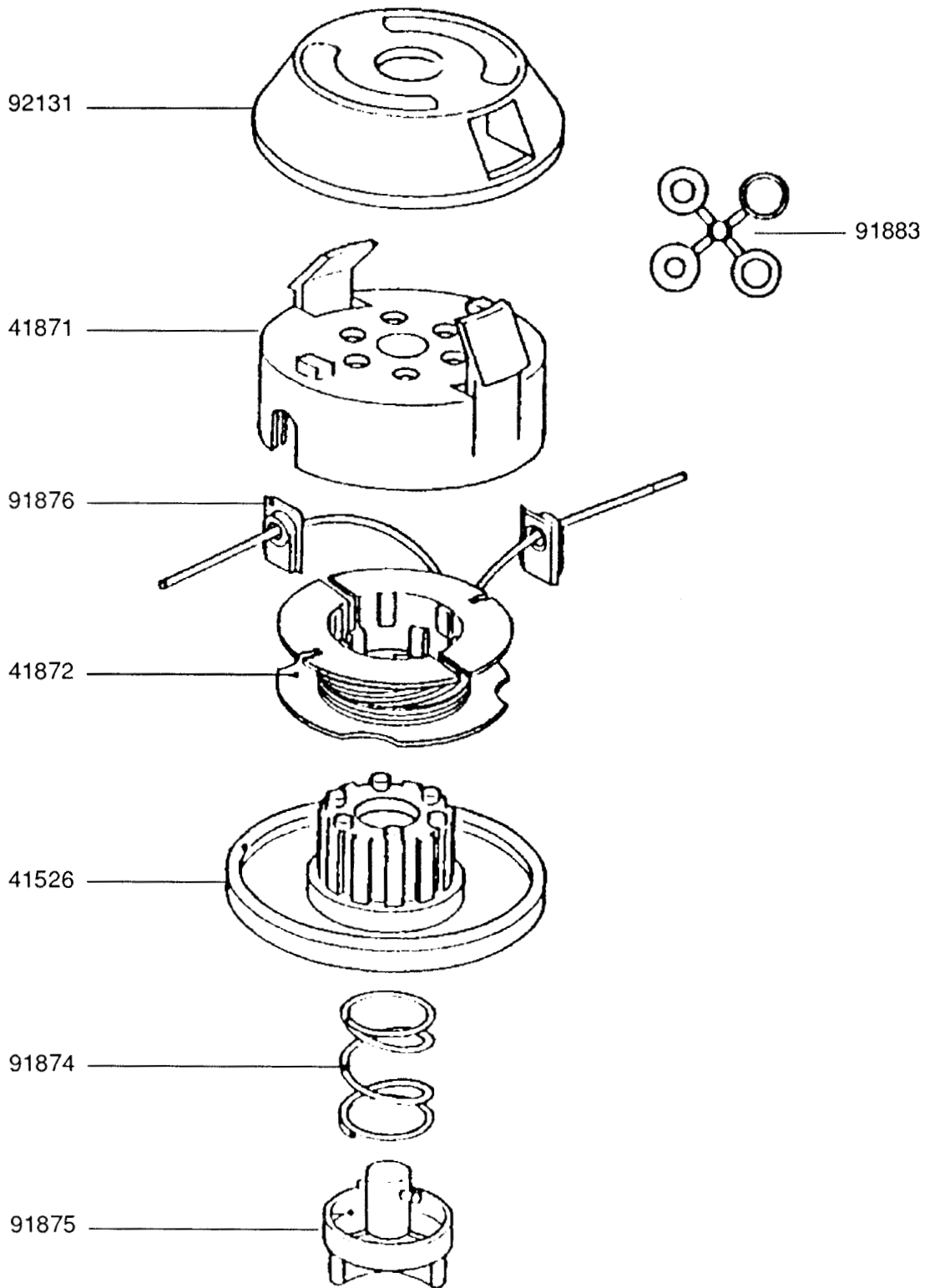


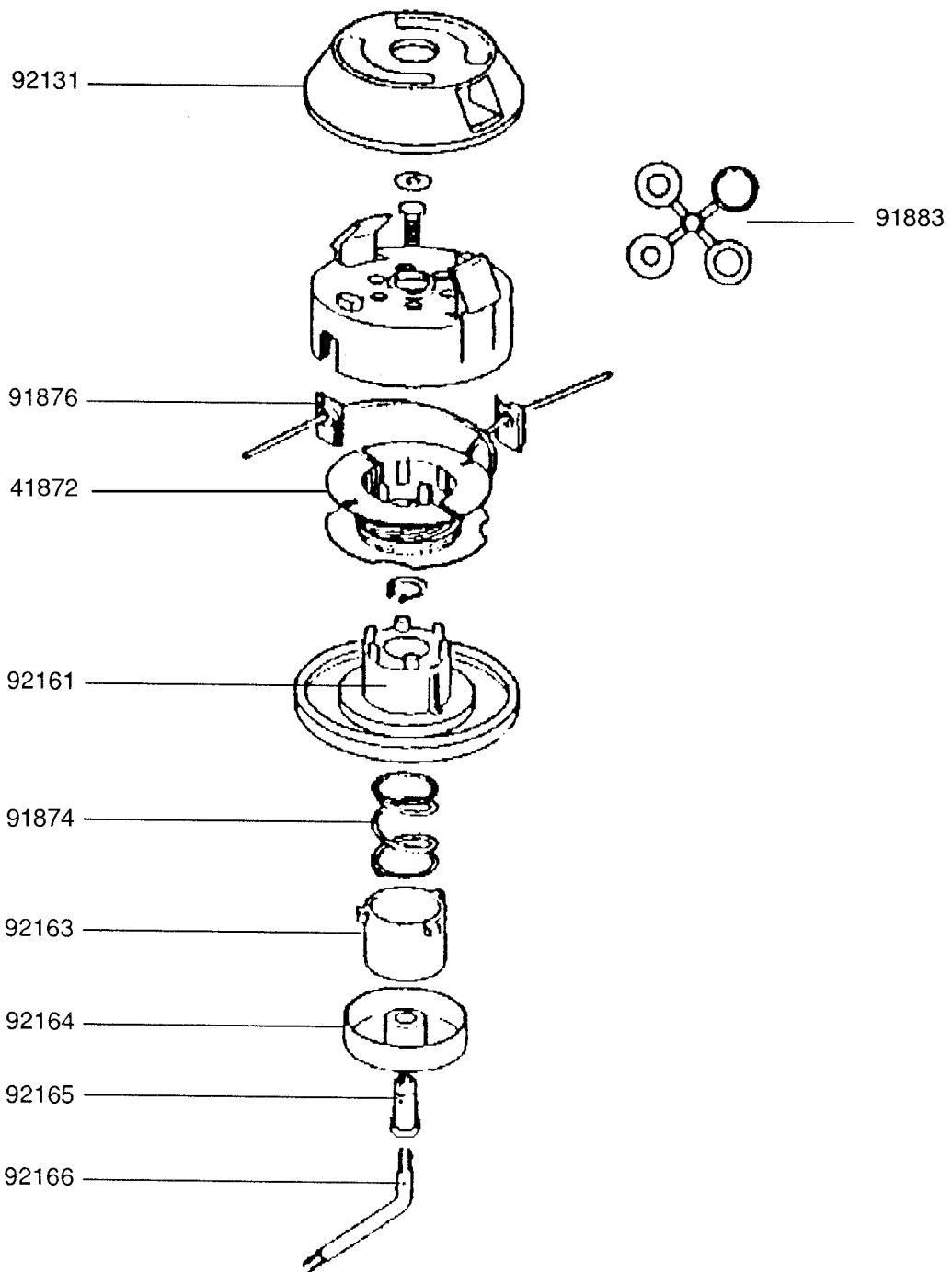
90168

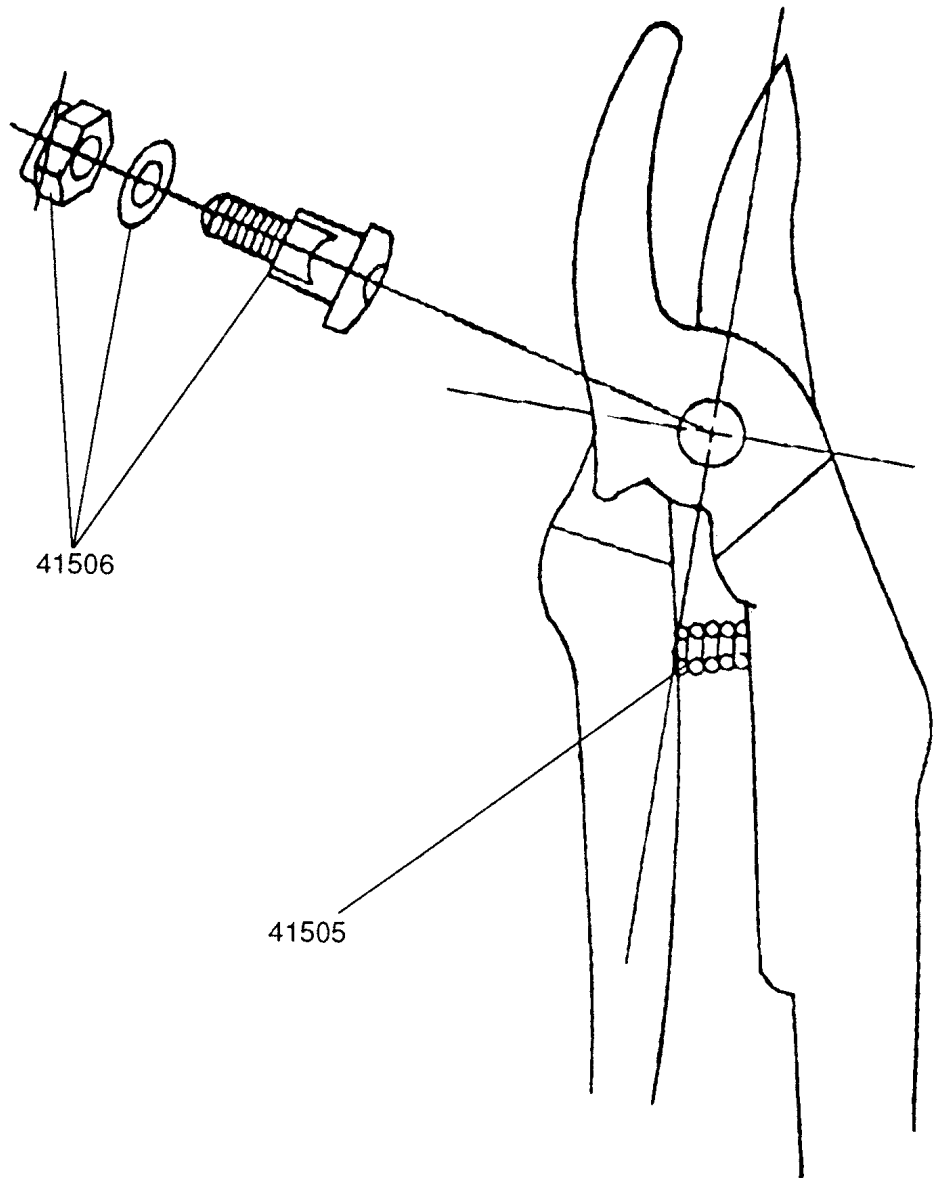


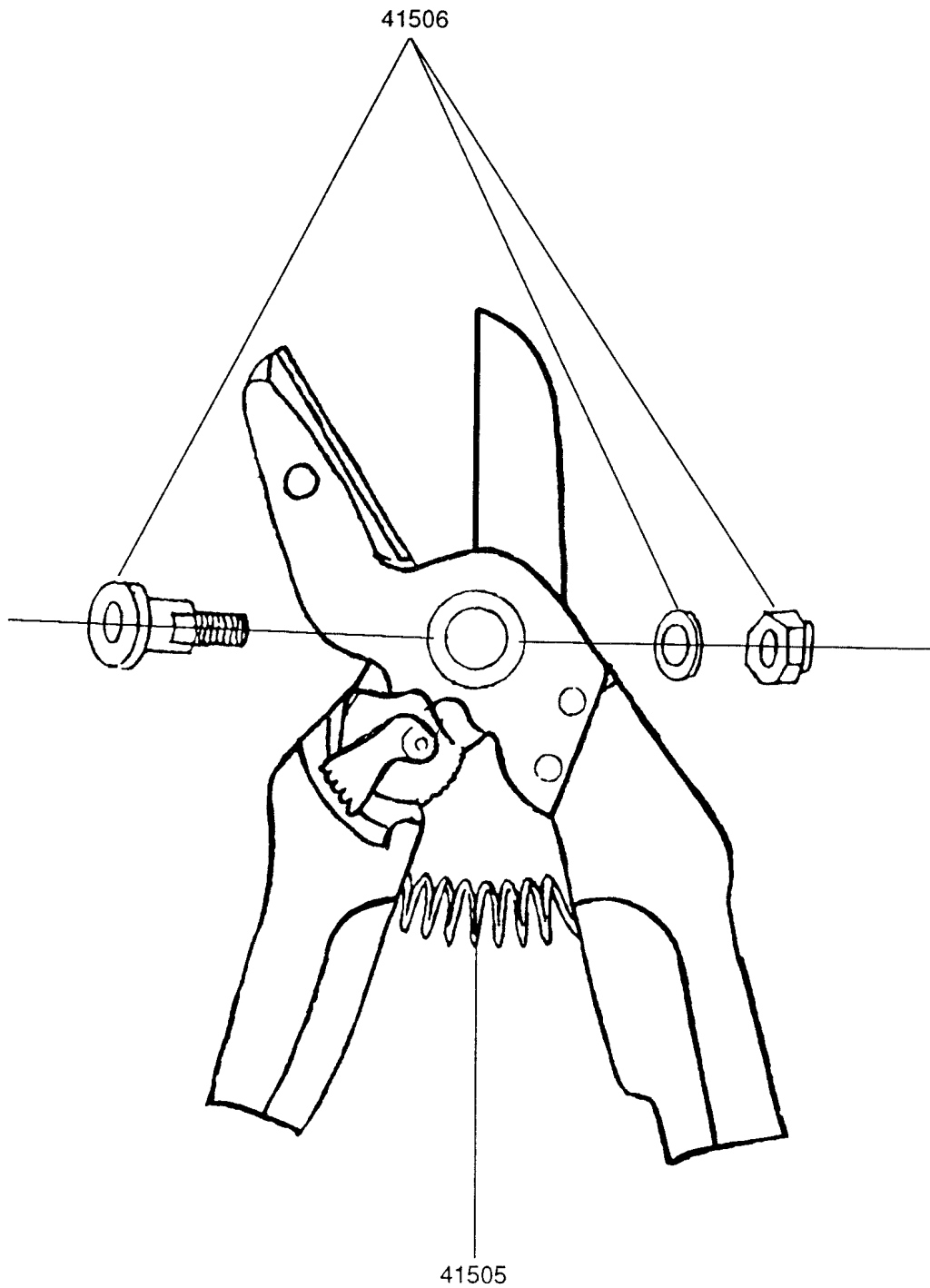
90166

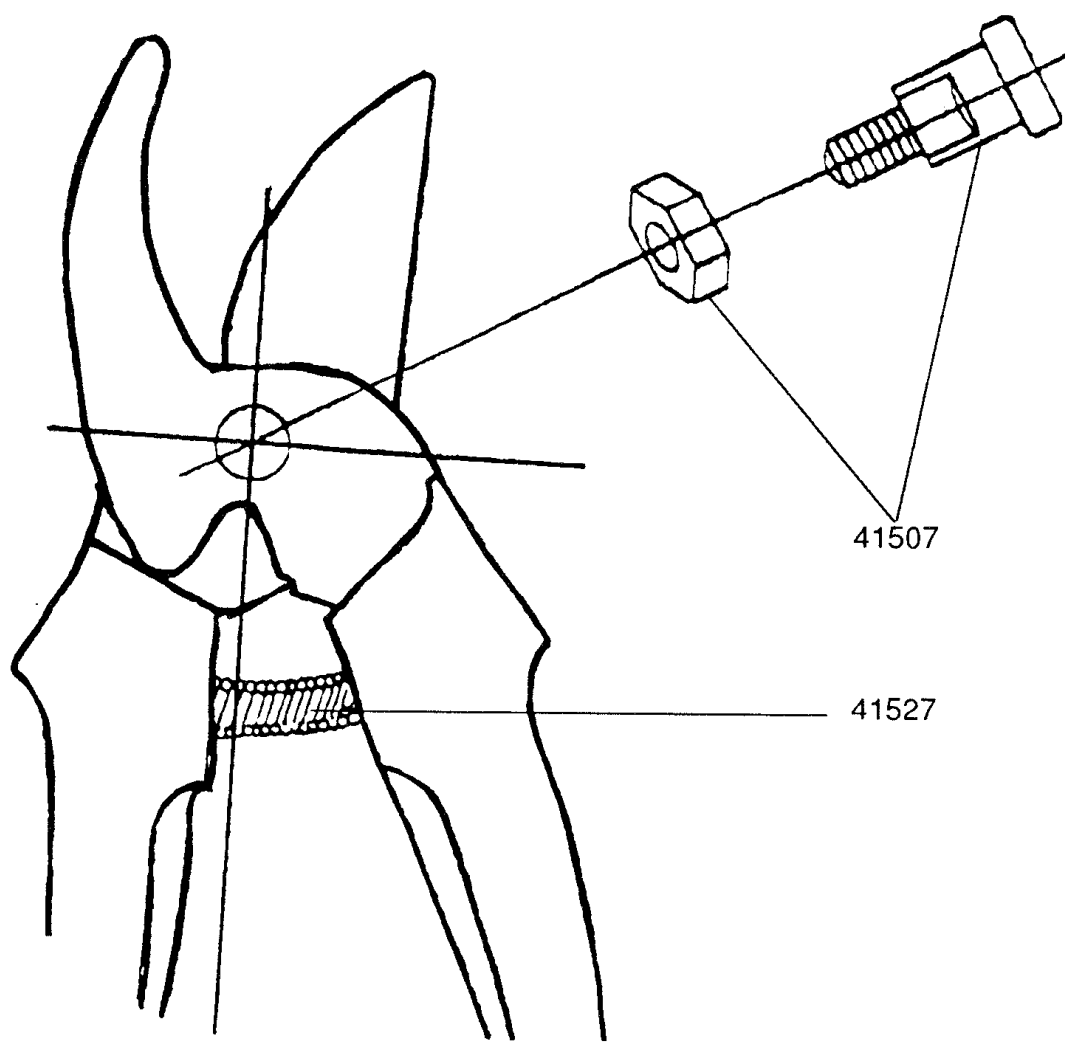


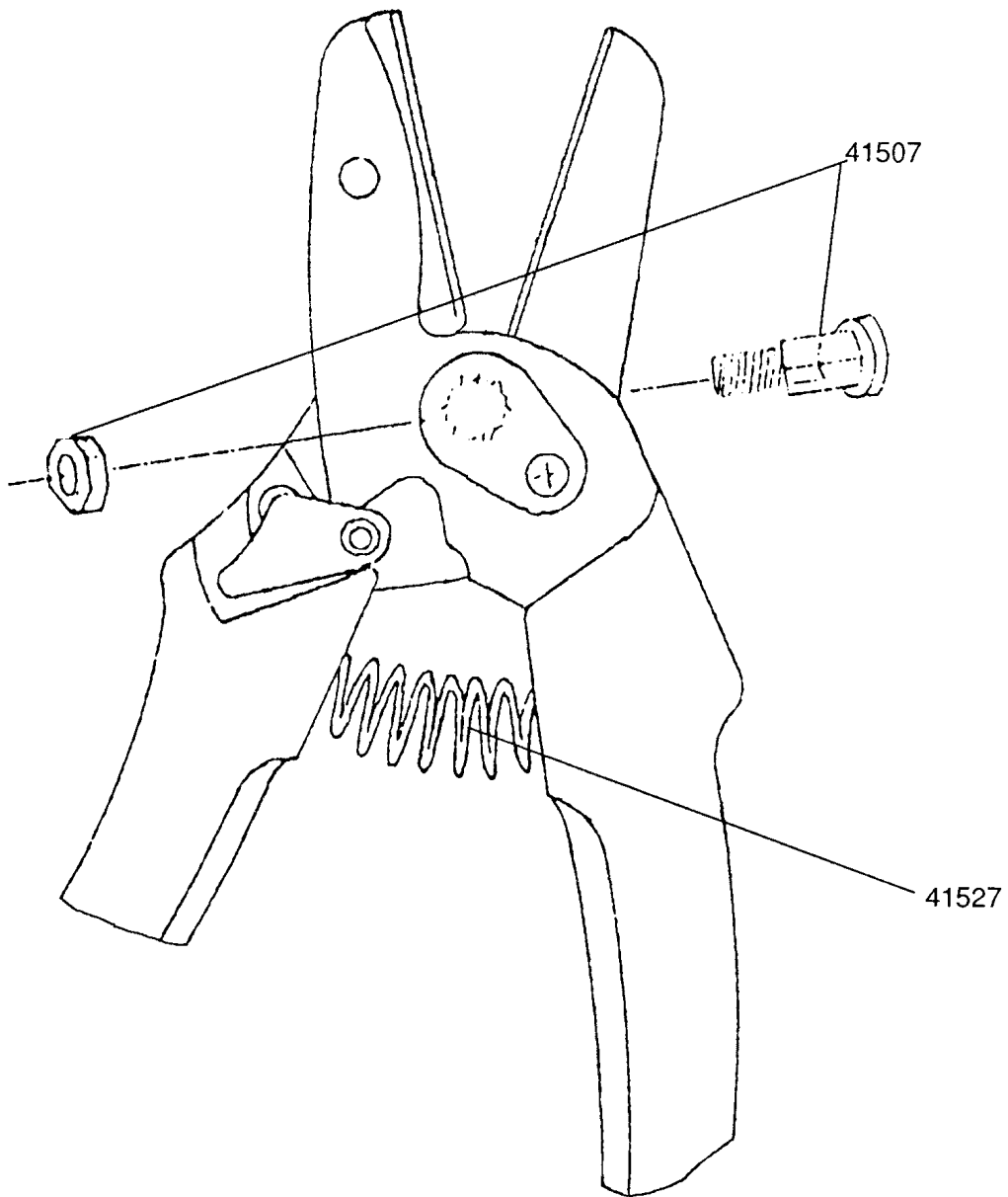


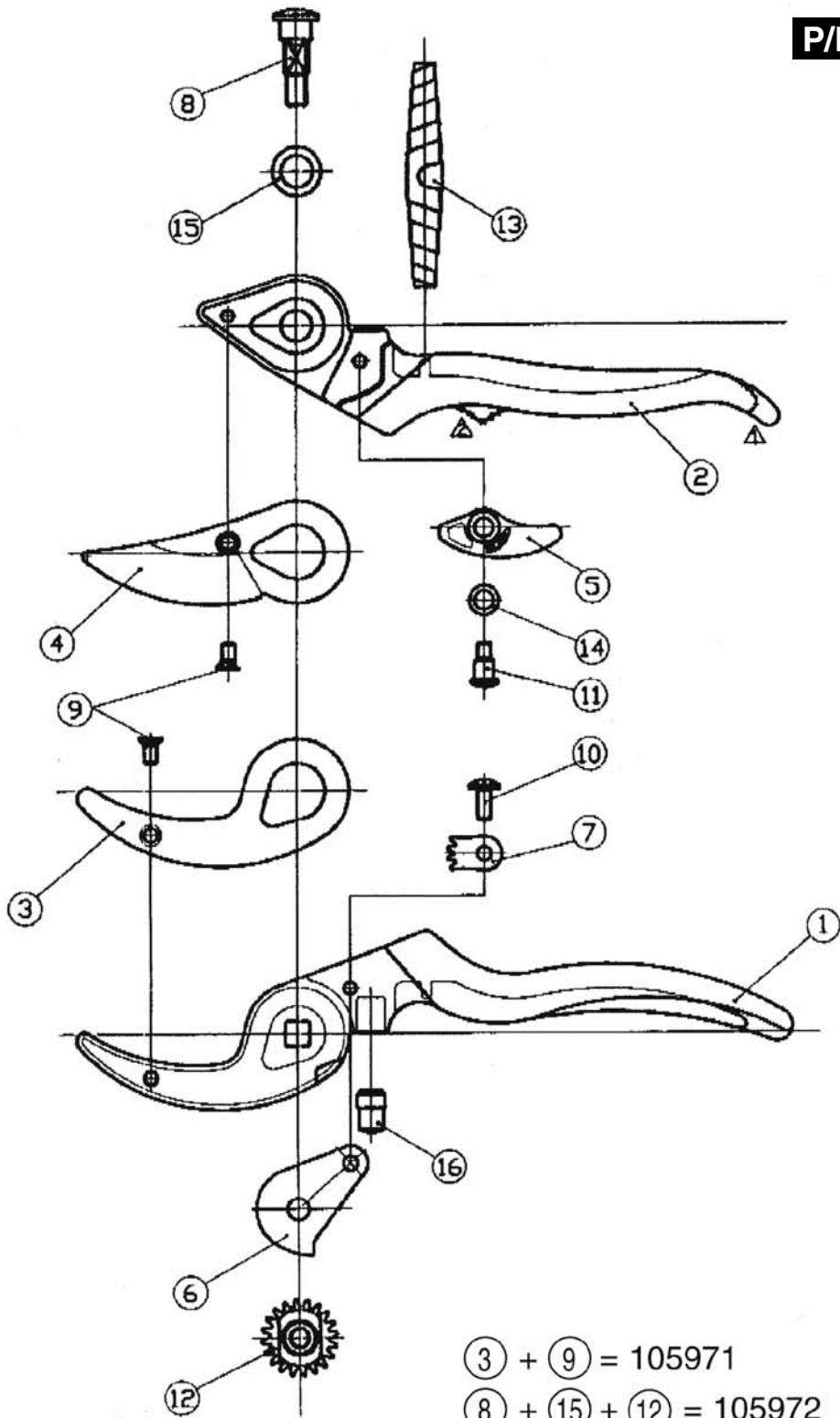












③ + ⑨ = 105971

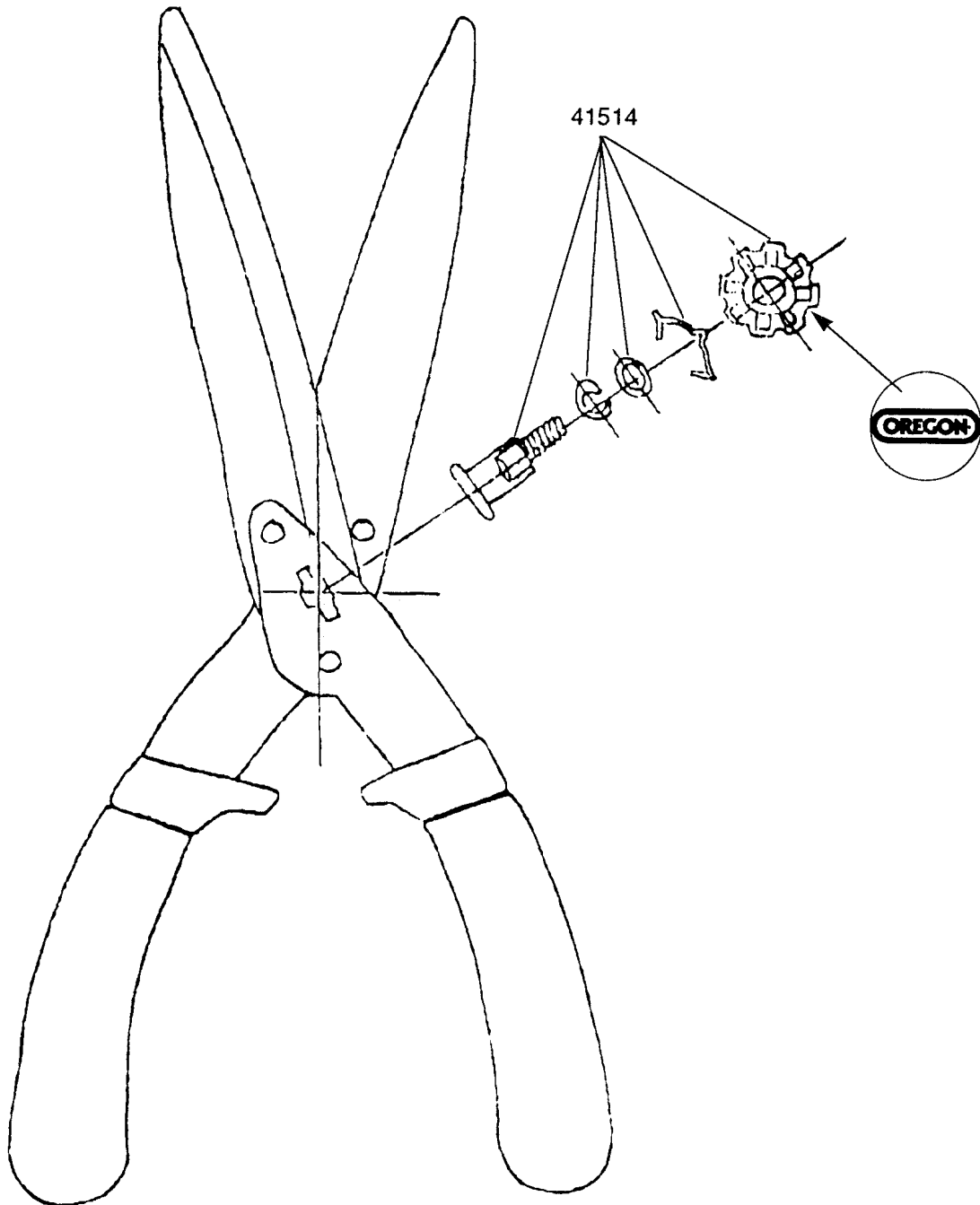
⑧ + ⑮ + ⑫ = 105972

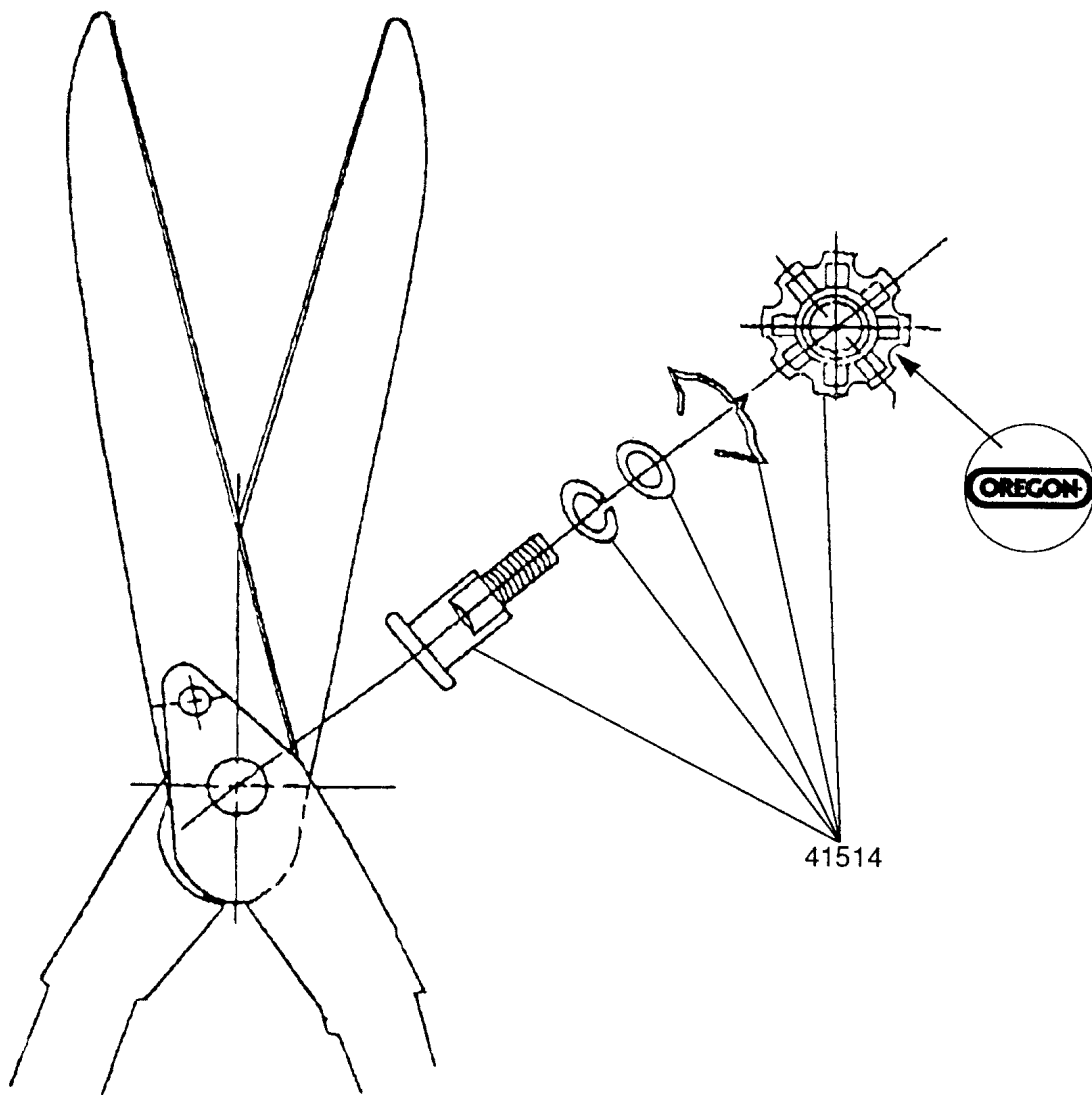
⑥ + ⑦ + ⑩ = 105974

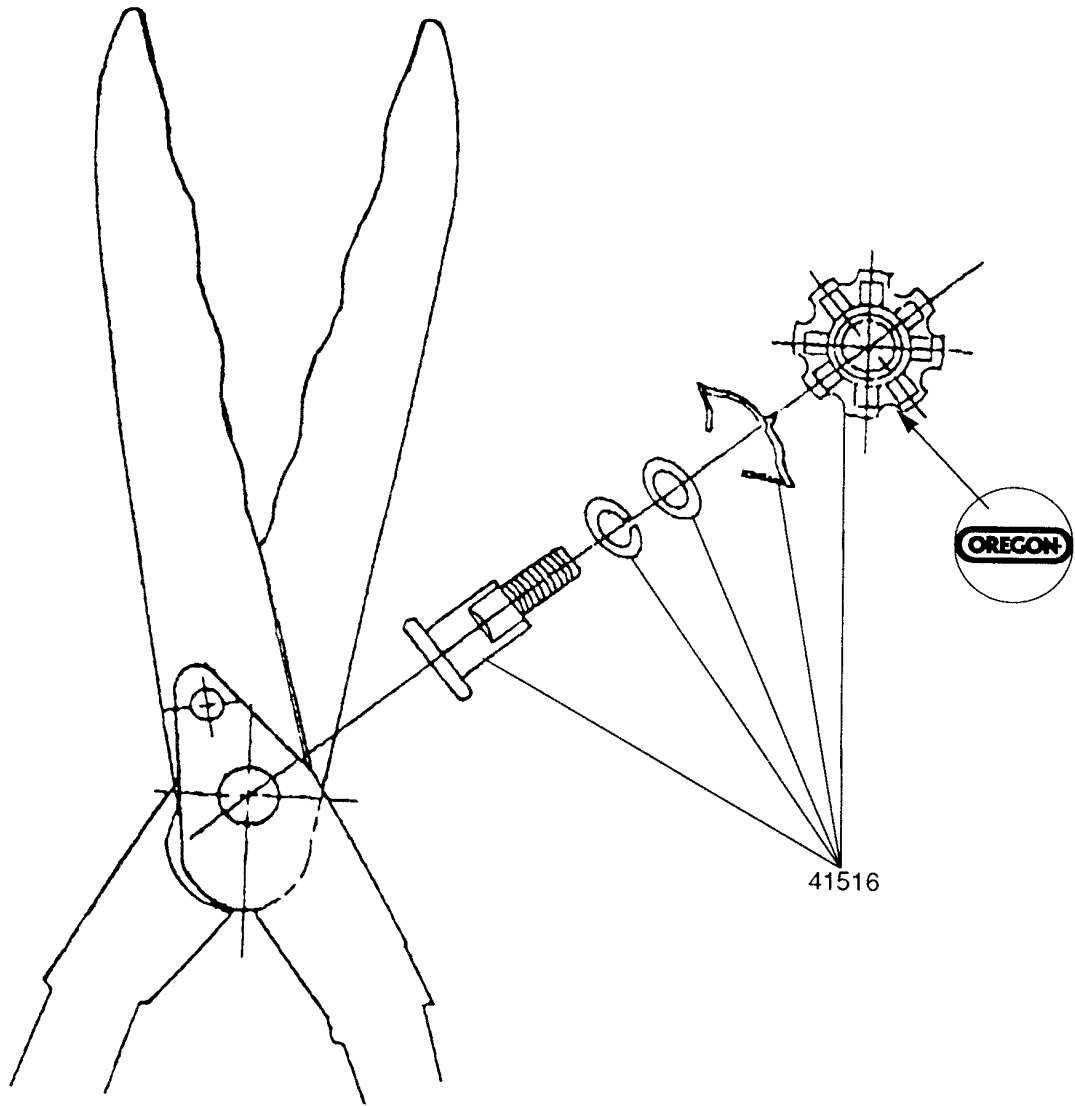
④ + ⑨ = 105975

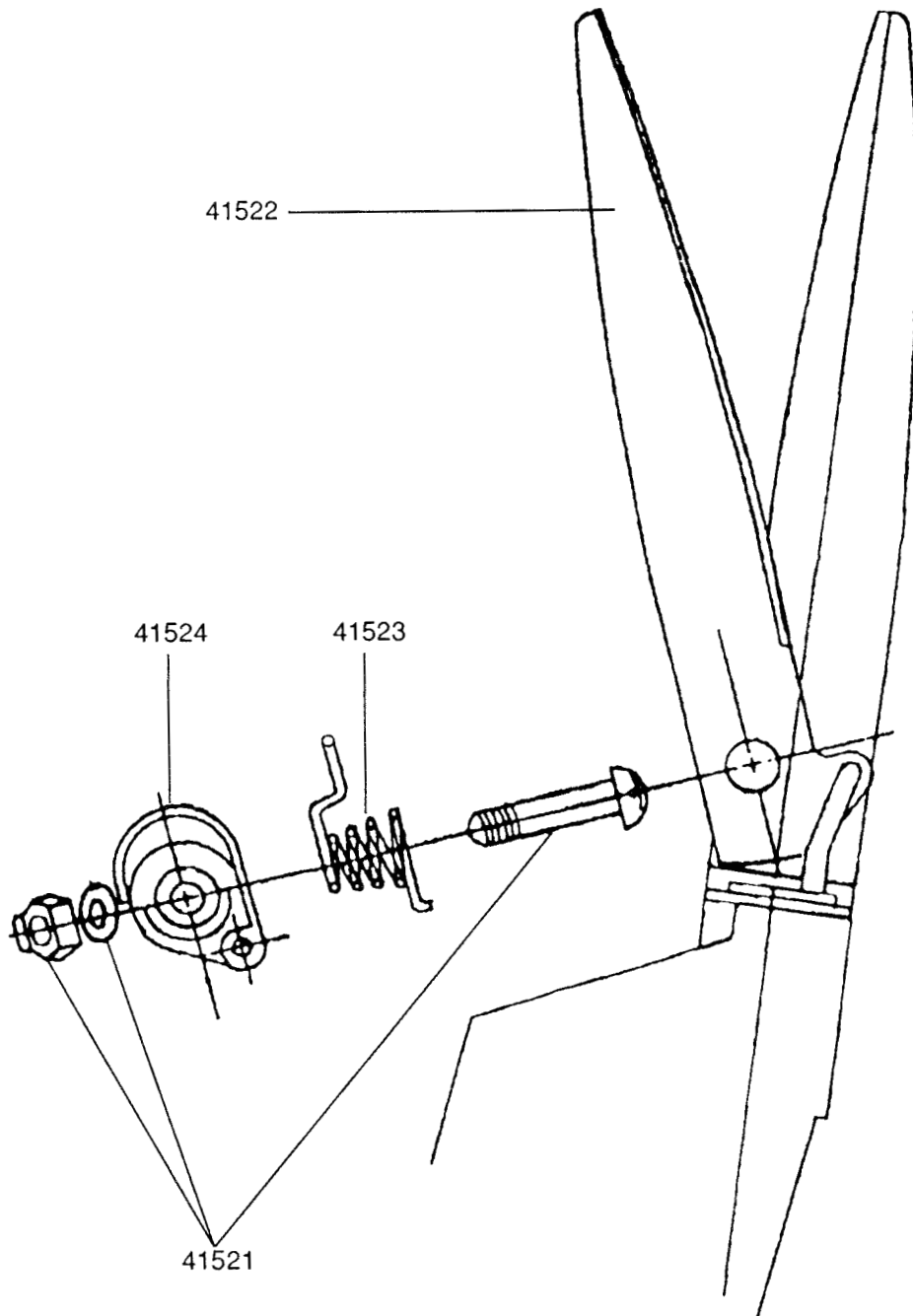
⑤ + ⑭ + ⑪ = 105973

⑬ = 41512



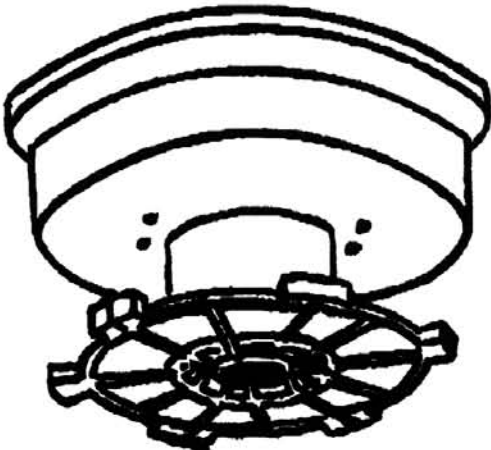








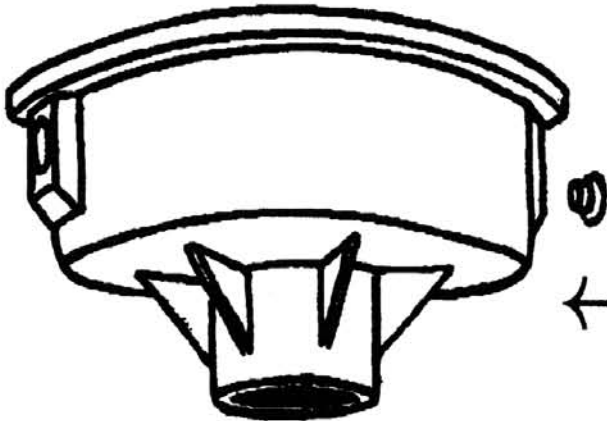
← **Knob**
295294



Spool →
295291



Spring →
295293

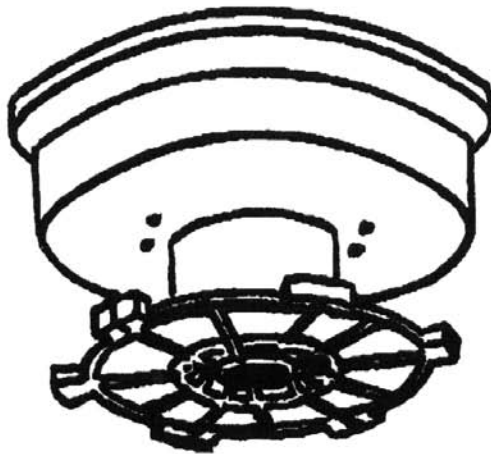


Eyelet → 
295292

← **Body**
295296



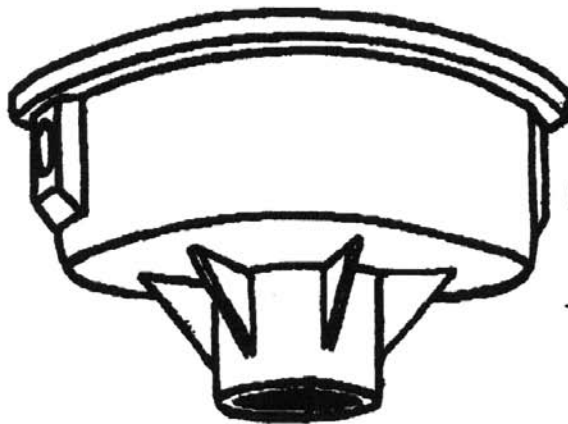
KNOB
295294



SPOOL
295291



SPRING
295293



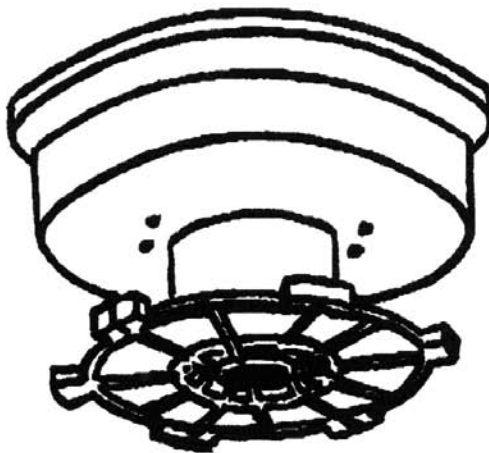
EYELET
295292



BODY
295297



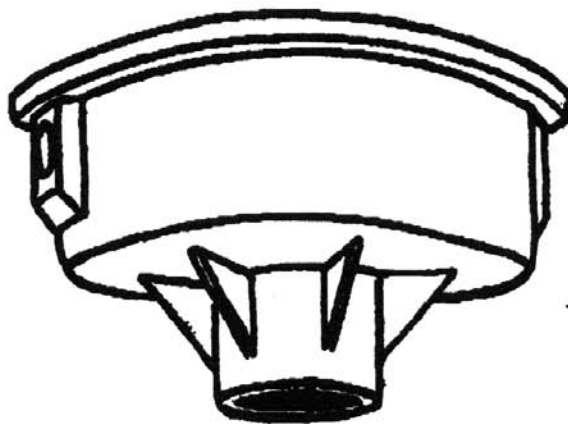
KNOB
295295



SPOOL
295291



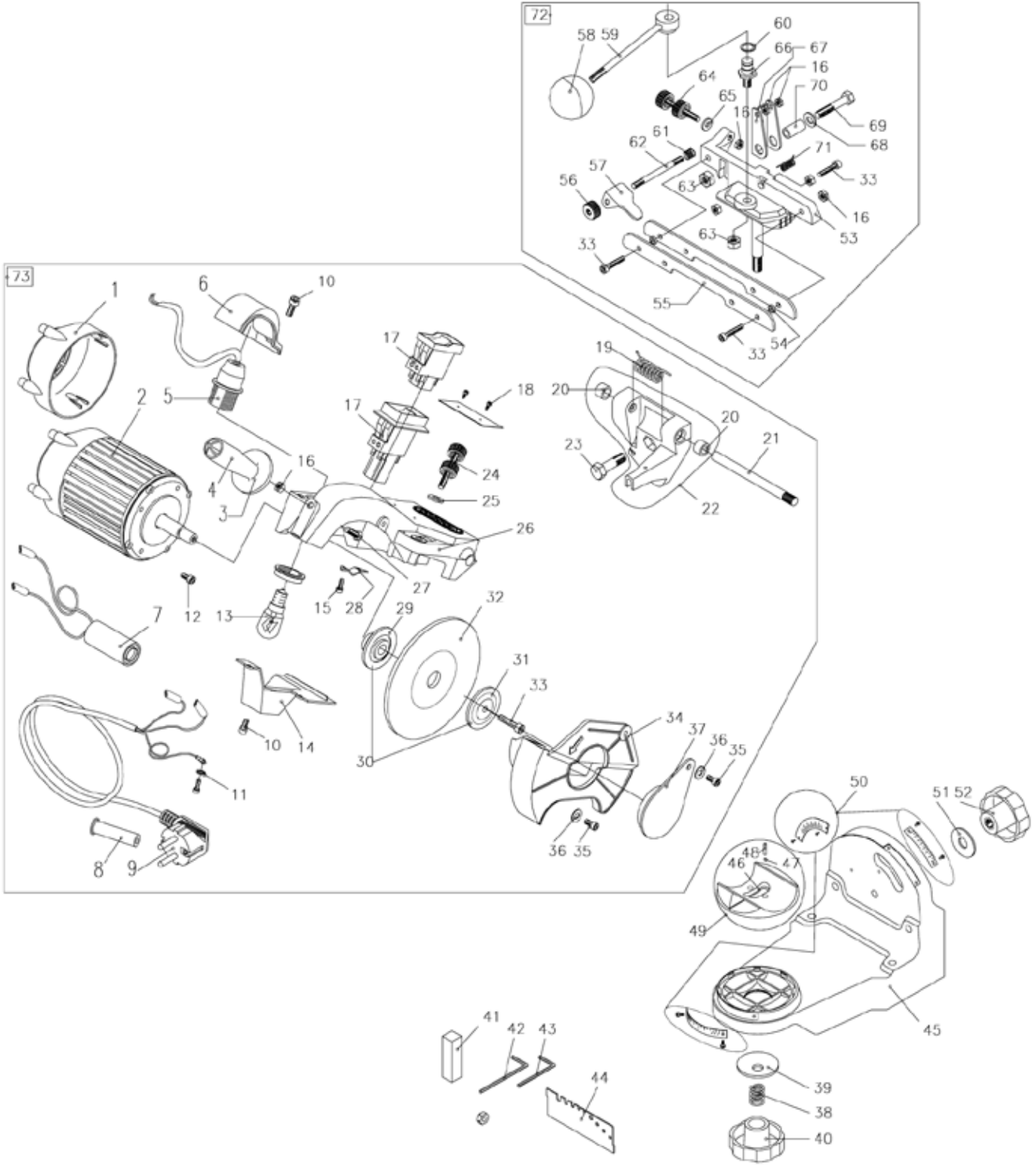
SPRING
295293



EYELET
295292



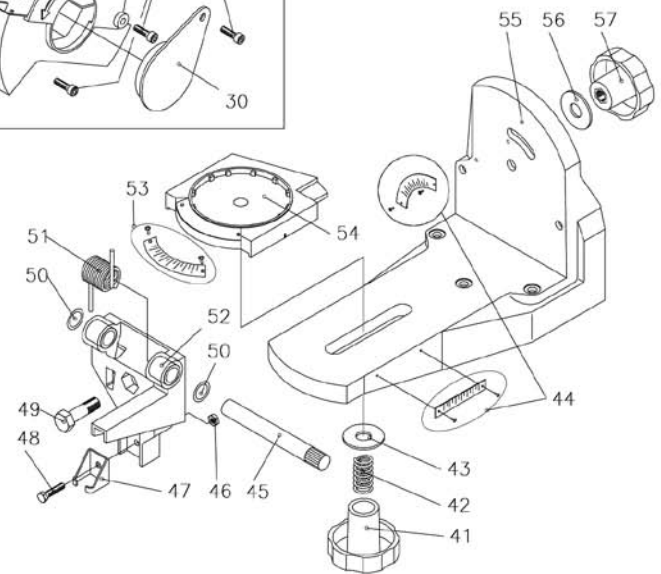
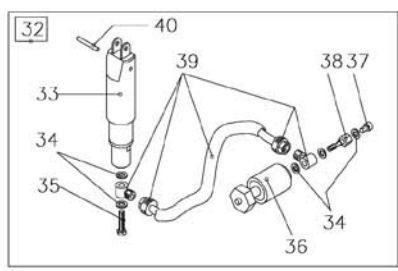
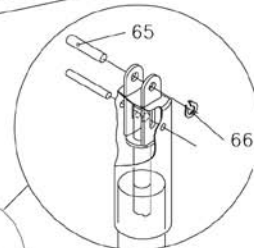
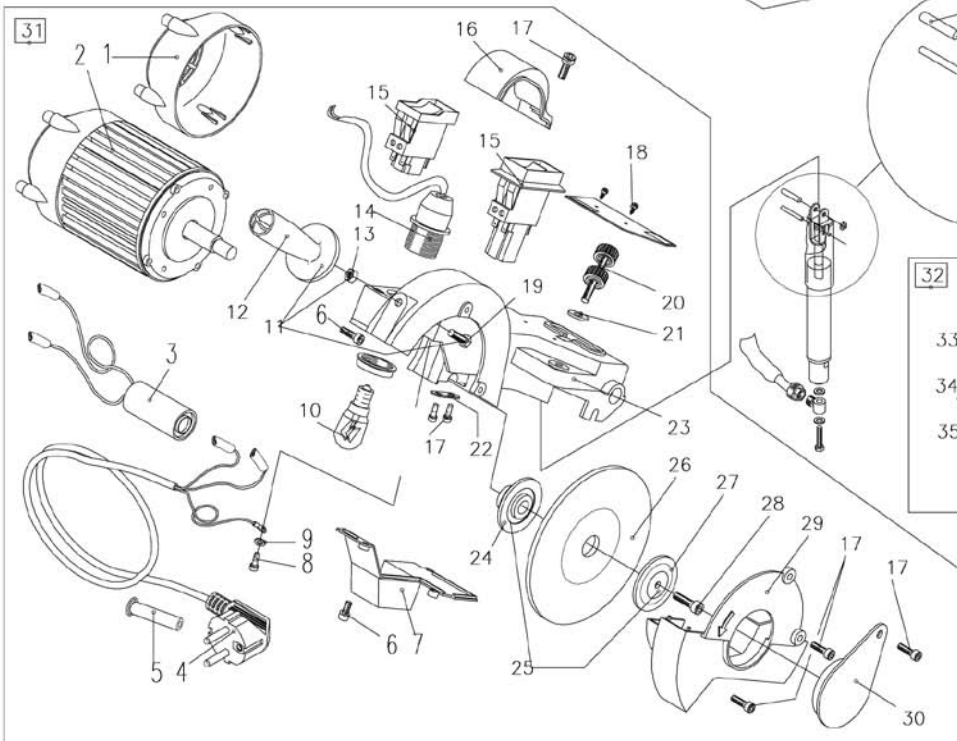
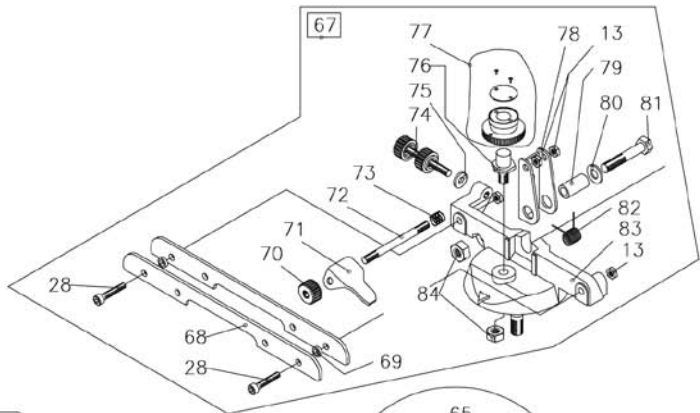
BODY
295298





P/N 32653A

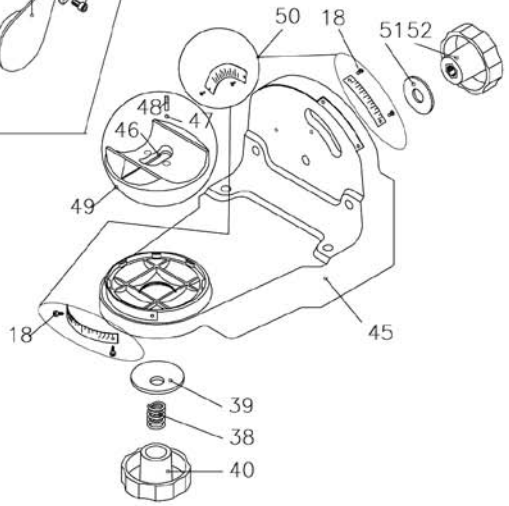
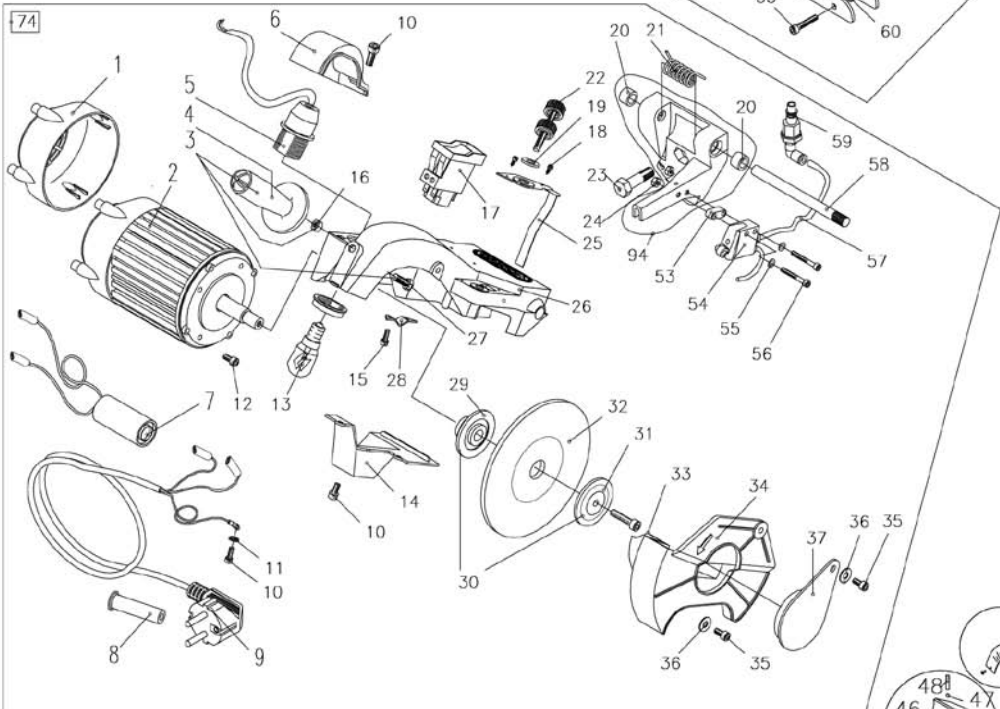
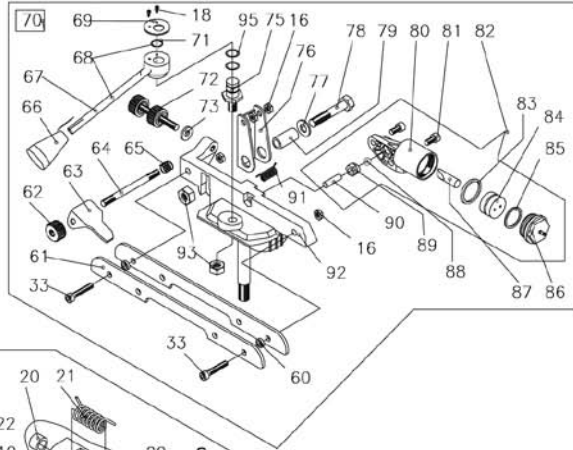
REF.	OREGON® P/N	QTY	DESCRIPTION
1	G003	1	FAN COVER (BLACK)
2	G002	1	E-MOTOR 230V
3 (4+6+27)	104284	1	HANDLE KIT
5	108505	1	LAMP SOCKET E14
6	108199	1	LAMP COVER
7	G035	1	CAPACITOR 450V AC 5MF (230V)
9	111033	1	CABLE KIT 230V C/W PLUG
9	111034	1	CABLE KIT C/W PLUG
9	111035	1	CABLE KIT C/W AUS. PLUG
10	G040	5	ZINC PLATED UNI SCREW
16	G066	7	UNI ZINC NUT
17	108499	1	230V ELECTRICAL SWITCH
19	G042	1	ARM SPRING
20	G044	2	BUSHING
21	G045	1	ARM ADJUSTING PIVOT
22	G043	1	ARM BEAR. BRACKET C/W BUSH. (BLACK)
24	109243	1	PAWL ADJUSTING C/W STOP (BLACK)
25	G028	1	RUBBER WASHER
26 (4+16+27+6)	106371	1	ARM BODY (BLACK)
29	108925	1	INNER WHEEL HOLDING FLANGE
30	108924	1	MOTOR ARBOR AND FLANGE KIT
31	108926	1	OUTER WHEEL FIXING FLANGE
32	32659	1	GRINDING WHEEL 145X22X3,2 (1/4"-.325"-.3/8"-.91)
32	32660	1	GRIND. WHEEL 145X22X4,7 (.3/8"-.404")
32	32661	1	GRINDING WHEEL 145X22X6,0 (depth regulator)
33	G071	4	ZINC PLATED UNI SCREW
34	G082	1	WHEEL PROTECTION SHIELD
37	104872	1	ADDITIONAL PROTECTION PART
38	G057	1	SPRING FOR KNOB
39	G056	1	WASHER FOR KNOB
40	109245	1	WISE FIXING KNOB (BLACK)
41	G088	1	DRESSING BRICK
43	G087	1	ALLEN WRENCH 4
44	G089	1	TEMPLATE
46	G053	1	SWIVEL PLATE
47	G052	2	BALL
48	G051	2	SPRING
49	104874	1	WISE SWIVEL PLATE KIT
50	104873	1	PLATE AND SCREWS KIT
52	109246	1	ARM FIXING KNOB (BLACK)
53	G072	1	WISE
54	35610	2	WISE SPACES
55	107637	1	JAWS FOR VISE (1 pc)
56	G061	1	ADJUSTING KNOB
57	G060	1	CHAIN STOP PAWL
58	G022	1	HANDLE KNOB
59	G062	1	CAM SHAFT C/W HANDLE AND KNOB
60	G063	1	STOP RING
61	G059	1	PAWL SPRING
62	G065	1	PAWL HOLDING PIN
64	G074	1	PAWL ADJUSTING C/W STOP (RED)
66	G073	1	CAM HOLDING PIVOT
67	35599	1	CHAIN STOP HOLDER
69	35609	1	UNI SCREW ZINC PLATED
70	G069	1	CHAIN STOP HOLDING BUSHING
71	G070	1	SPRING FOR CHAIN STOP HOLDER
72	110597	1	COMPLETE VISE KIT
73	104875	1	ARM C/W 230V E-MOTOR ASS. (BLACK)





P/N 106540

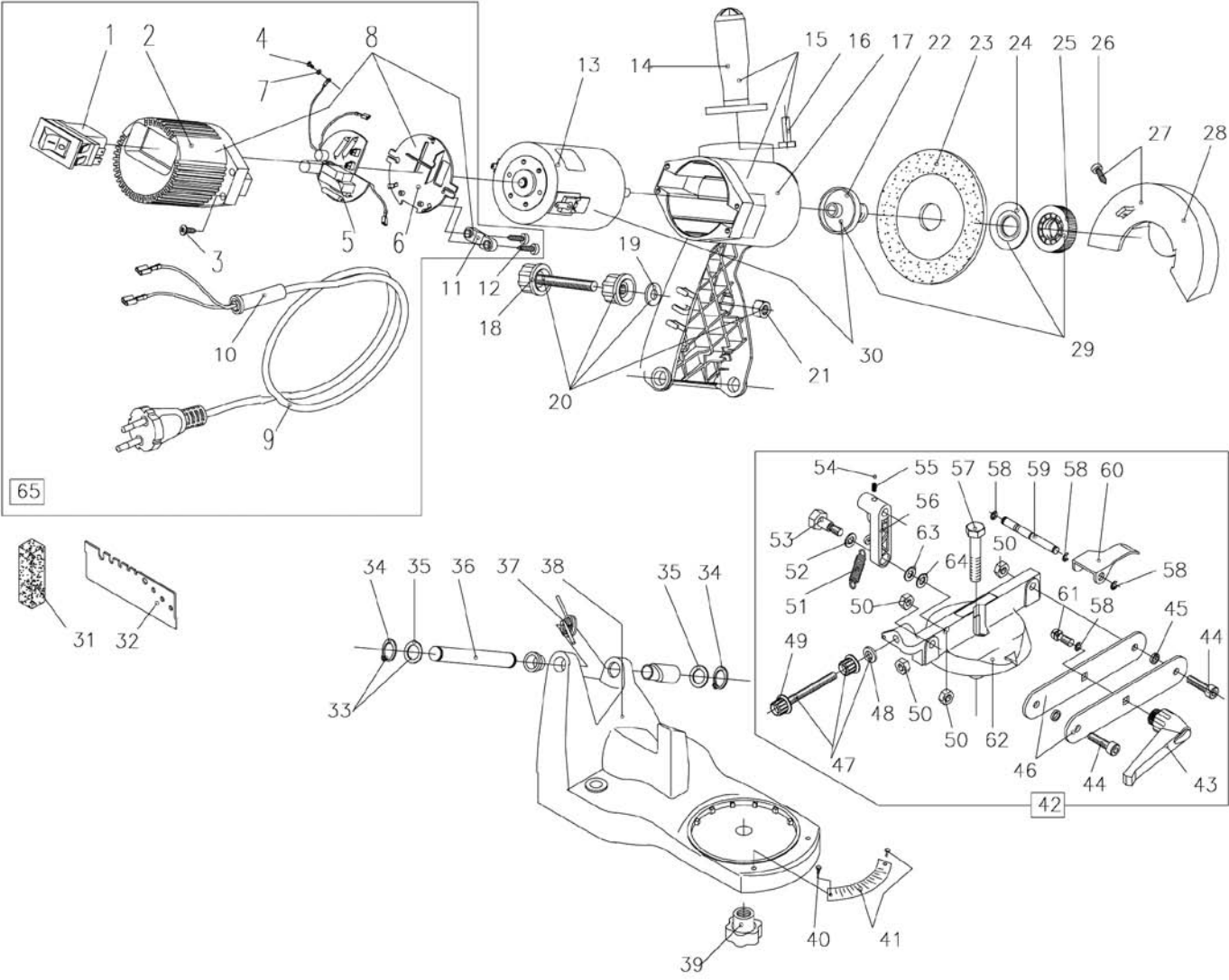
REF.	OREGON® P/N	QTY	DESCRIPTION
1	G003	1	FAN COVER
2	G002	1	E-MOTOR 230V
3	G035	1	CAPACITOR 450VAC 5MF (230V)
4	111033	1	CABLE KIT 230 V C/W PLUG
4	111034	1	CABLE KIT C/W PLUG
4	111035	1	CABLE KIT C/W AUS. PLUG
7	108496	1	E-CARDBOARD COVER
11	104284	1	HANDLE KIT
13	G066	5	UNI ZINC NUT
14	108505	1	LAMP SOCKET E14
15	108499	1	230V ELECTRICAL SWITCH
16	108199	1	LAMP COVER
17	G040	6	UNI ZINC SCREW
18	109174	8	UNI ZINC SCREW
20	109243	1	ARM ADJUSTING
21	G028	1	RUBBER WASHER
23	108495	1	ARM BODY (BLACK)
24	108925	1	INNER WHEEL HOLDING FLANGE
25	108924	1	MOTOR ARBOR AND FLANGE KIT
26	32659	1	GRINDING WHEEL 145X22X3,2 (1/4"-.325"-.3/8"-91)
26	32660	1	GRIND. WHEEL 145X22X4,7 (.3/8"-.404")
26	32661	1	GRINDING WHEEL 145X22X6,0 (depth regulator)
27	108926	1	OUTER WHEEL FIXING FLANGE
28	G071	3	ZINC PLATED UNI SCREW
29	109248	1	WHEEL PROTECTION SHIELD
30	104872	1	ADDITIONAL PROTECTION PART
31	108494	1	ARM C/W 230V E-MOTOR ASSEMBLY
31	111032	1	ARM C/W 230V E-MOT. ASSEM. - AUS PLUG
31	111031	1	ARM C/W 230V E-MOT. ASSEM. - CH PLUG
32	108493	1	COMPLETE HYDRAULIC LOCK SYSTEM
33	109249	1	MAIN HYDRAULIC CYLINDER COMPLETE
34	109252	5	COPPER WASHER
35	109253	1	DOUBLE HOLLOW NIPPLE
36	109256	1	COMPLETE CHAIN TIGHTENING CYLINDER
39	111217	1	COMPLETE HYDRAULIC LINE ASSEMBLY
41	109245	1	WISE FIXING KNOB
42	G057	1	SPRING FOR KNOB
43	G056	1	WASHER FOR KNOB
44	108497	1	SCREW AND PLATE KIT
47	109250	1	MAIN CYLINDER BRACKET
51	35589	1	ARM SPRING
53	108468	1	SCREW AND PLATE KIT FOR VISE SWING.
54	108501	1	WISE SUPPORTING SLIDE
55	108498	1	BASEMENT (BLACK)
57	109246	1	ARM LIGHTENING KNOB
59	G088	1	DRESSING BRICK
60	G089	1	TEMPLATE
61	G087	1	ALLEN WRENCH 4
67	108504	1	COMPLETE VISE KIT
68	107637	1	WISE JAWS (1 pc)
69	35610	2	WISE SPACERS KIT
70	108503	1	ADJUSTING KNOB (BLACK)
71	G060	1	CHAIN STOP PAWL
72	G065	1	PAWLS HOLDING PIN
73	G059	1	PAWL SPRING
74	109244	1	PAWLS ADJUSTING C/W STOP (BLACK)
77	109247	1	CHAIN TIGHTENING CAM KIT
78	35599	1	CHAIN STOP HOLDER
79	G069	1	CHAIN STOP HOLDING BUSHING
81	35609	1	UNI SCREW ZINC PLATED
82	G070	1	SPRING FOR CHAIN STOP HOLDER





P/N 106360

REF.	OREGON® P/N	QTY	DESCRIPTION
1	G003	1	FAN COVER (BLACK)
2	G002	1	E-MOTOR 230V
5	108505	1	LAMP SOCKET E14
6	108199	1	LAMP COVER
7	G035	1	CAPACITOR 450V AC 5MF (230V)
9	111033	1	CABLE KIT 230V C/W PLUG
9	111034	1	CABLE KIT C/W PLUG
10	G040	5	ZINC PLATED UNI SCREW
16	G066	5	UNI ZINC NUT
17	108499	1	230V ELECTRICAL SWITCH
19	G028	1	RUBBER WASHER
20	G044	2	BUSHING
21	G042	1	ARM SPRING
22	G029	1	PAWL ADJUSTING C/W STOP (RED)
25	105991	1	MICRO SWITCH CONTROL
26	106371	1	ARM BODY (BLACK)
29	108925	1	INNER WHEEL HOLDING FLANGE
30	108924	1	MOTOR ARBOR AND FLANGE KIT
31	108926	1	OUTER WHEEL FIXING FLANGE
32	32659	1	GRINDING WHEEL 145X22X3,2 (1/4"-.325"-.3/8"-91)
32	32660	1	GRIND. WHEEL 145X22X4,7 (.3/8"-.404")
32	32661	1	GRINDING WHEEL 145X22X6,0 (depth regulator)
33	G071	3	UNI SCREW
34	G082	1	WHEEL PROTECTION SHIELD
37	104872	1	ADDITIONAL PROTECTION PART
38	G057	1	SPRING FOR KNOB
39	G056	1	WASHER FOR KNOB
40	109245	1	WISE FIXING KNOB (BLACK)
41	G088	1	DRESSING BRICK
43	G087	1	ALLEN WRENCH 4
44	G089	1	TEMPLATE
46	G053	1	SWIVEL PLATE
47	G052	2	BALL
48	G051	2	BALL SPRING
49	104874	1	WISE SWIVEL PLATE KIT
50	104873	1	PLATE AND SCREWS KIT
52	109246	1	ARM FIXING KNOB (BLACK)
54	105994	1	MICRO SWITCH EVM100-4N-01
58	G045	1	ARM ADJUSTING PIVOT
60	35610	2	WISE SPACER
61	107637	1	JAWS FOR VISE (1 pc)
62	G061	1	ADJUSTING KNOB (RED)
63	G060	1	CHAIN STOP PAWL
64	G065	1	PAWL HOLDING PIN
65	G059	1	PAWL SPRING
66	G022	1	HANDLE
68	106376	1	CAM SHAFT KIT
70	106375	1	COMPLETE VISE KIT
71	G063	1	STOP RING
72	G074	1	PAWL ADJUSTING C/W STOP (RED)
74	106373	1	ARM C/W 230V ASV MOTOR (BLACK)
74	106374	1	ARM C/W 230V ASV MOTOR CH (BLACK)
75	G073	1	CAM HOLDING PIVOT
76	35599	1	CHAIN STOP HOLDER
78	35609	1	UNI SCREW ZINC PLATED
79	G069	1	CHAIN STOP HOLDING BUSHING
82	105993	1	COMPLETE CYLINDER BODY
91	G070	1	SPRING FOR CHAIN STOP HOLDER
92	G072	1	VISE
94	G043	1	ARM BEAR. BRACKET C/W BUSH. (BLACK)



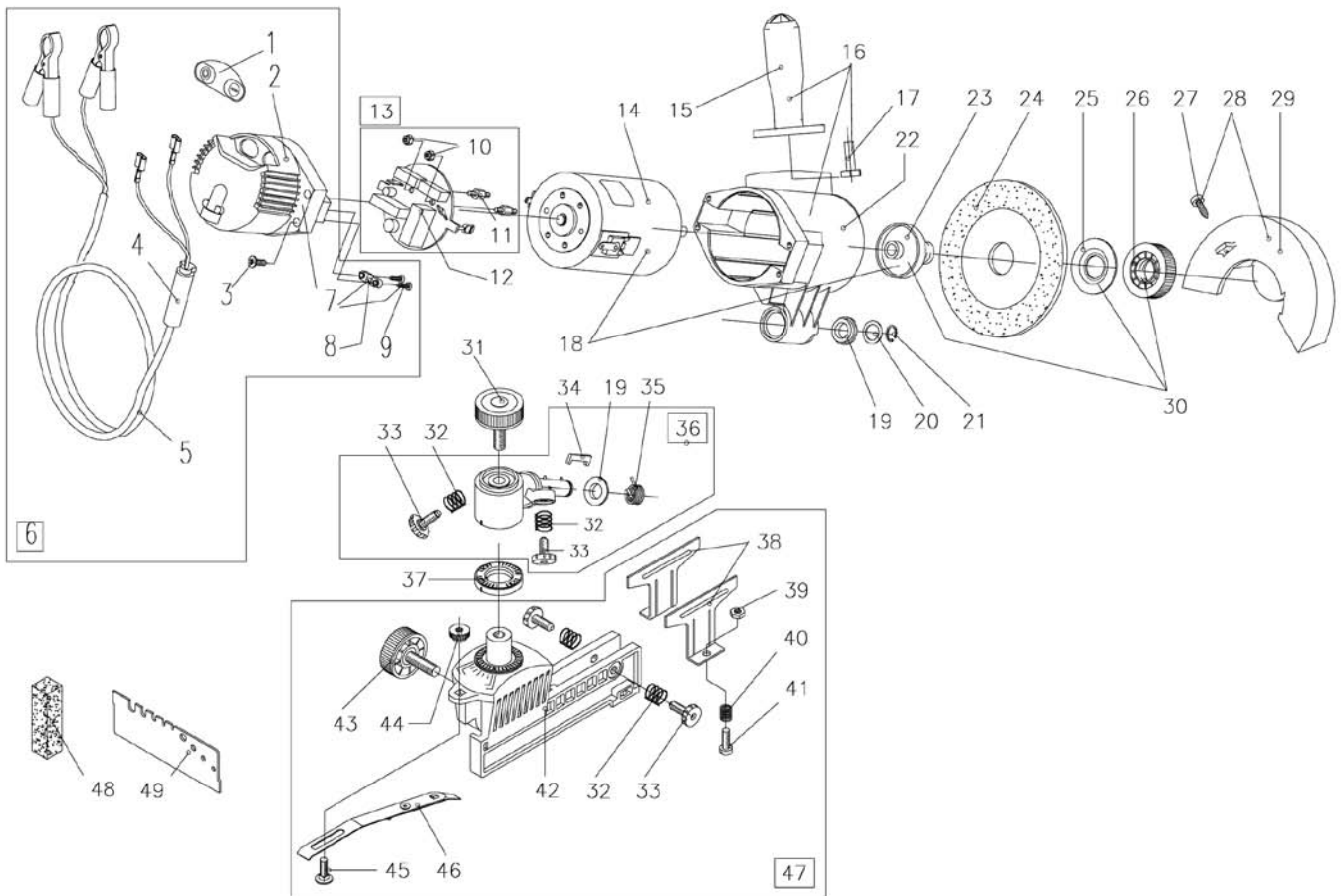
65

42



P/N 106550

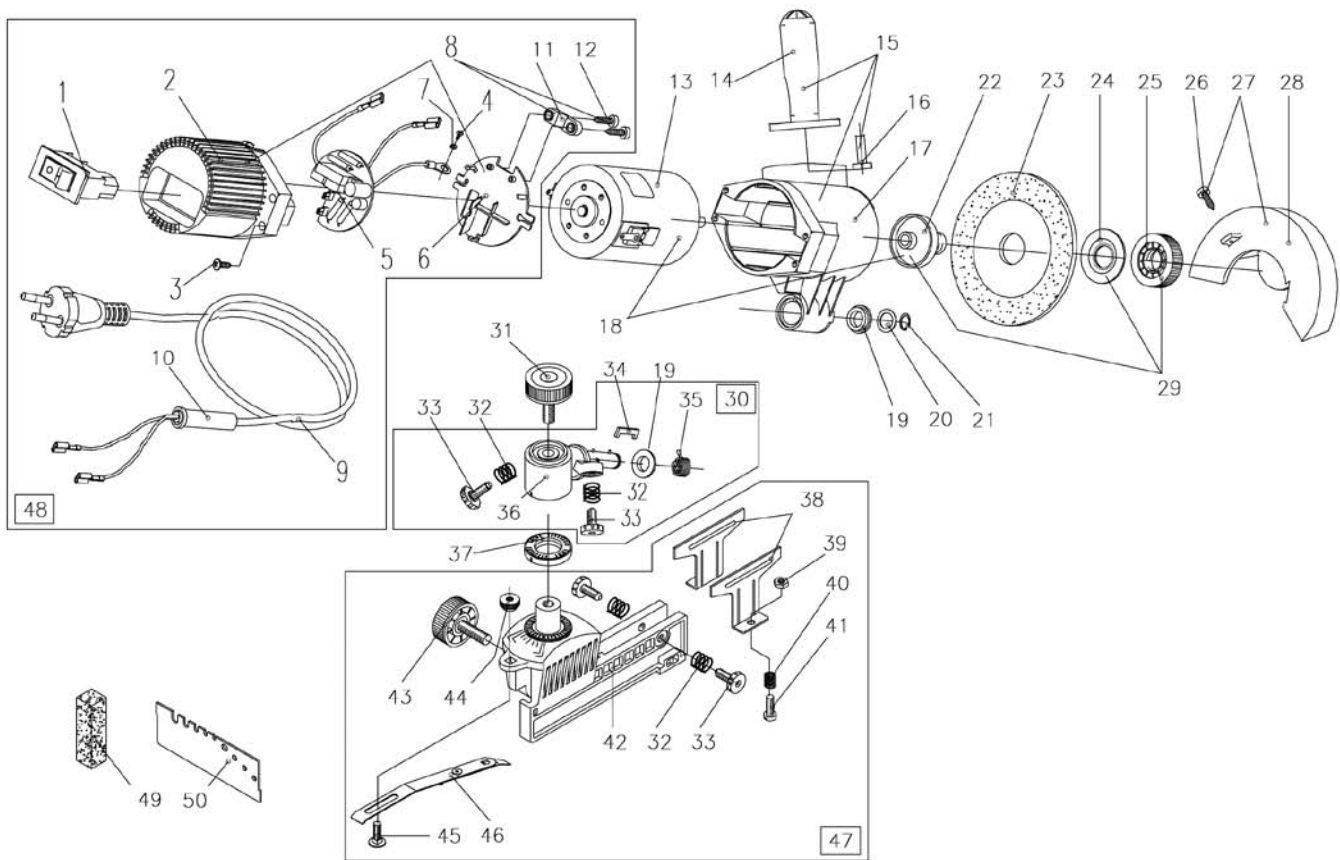
REF.	OREGON® P/N	QTY	DESCRIPTION
1	108499	1	SWITCH 230V
5	111017	1	120V/230V ELECTRIC CARDBOARD
8	111014	1	COVER AND HOLDING PLATE KIT
9	111025	1	ELECTRICAL CABLE KIT 230V
9	111026	1	ELECTRICAL CABLE KIT 230V - CH PLUG
9	111027	1	ELECTRICAL CABLE KIT 230V - AUS PLUG
15	111028	1	HANDLE KIT
19	G028	1	RUBBER WASHER
20	108205	1	ARM ADJUSTING KIT
22	109596	1	WHEEL HOLDING ARBOR
23	106547	1	GRINDING WHEEL 105X22X3,2 (1/4"-.325"-.3/8"-.91)
23	106548	1	GRIND. WHEEL 105X22X4,7 (.3/8"-.404")
23	106549	1	GRINDING WHEEL 105X22X6,0 (depth regulator)
25	109169	1	WHEEL TIGHTENING NUT
27	109170	1	WHEEL PROTECT. KIT - SHIELD AND SCR.
29	108465	1	WHEEL FIXING AND TIGHTENING KIT
30	111018	1	E-MOTOR AND ARBOR KIT 230V
31	G088	1	DRESSING BRICK
32	G089	1	TEMPLATE
33	108463	1	ARM WASHERS KIT
37	109175	1	ARM RETURN SPRING
38	108467	1	BASEM. CIW BUSHING AND PLATE
39	108290	1	VICE TIGHTENING KNOB
41	108468	1	VICE SCREWS AND PLATE KIT
42	108476	1	COMPLETE VISE
43	109171	1	VICE TIGHTENING LEVIER
45	35610	2	JAWS SPACERS
46	109172	2	VICE JAWS
47	108473	1	CHAIN ADJUSTING SCREW KIT
51	109174	1	CHAIN STOP RETURN SPRING
53	108472	1	CHAIN STOP HOLDER RETURN SPRING
59	108475	1	CHAIN STOP PAWL PIN
60	G060	1	CHAIN STOP PAWL
61	108474	1	JAWS LIGHTENER
63	108469	1	DIN WASHER
65	111019	1	COMPLETE ELECTRICAL CABLE 230V
65	111020	1	COMPL. ELECTRICAL CABLE 230V - CH -
65	111021	1	COMPL. ELECTRICAL CABLE 230V - AUS -





P/N 108341

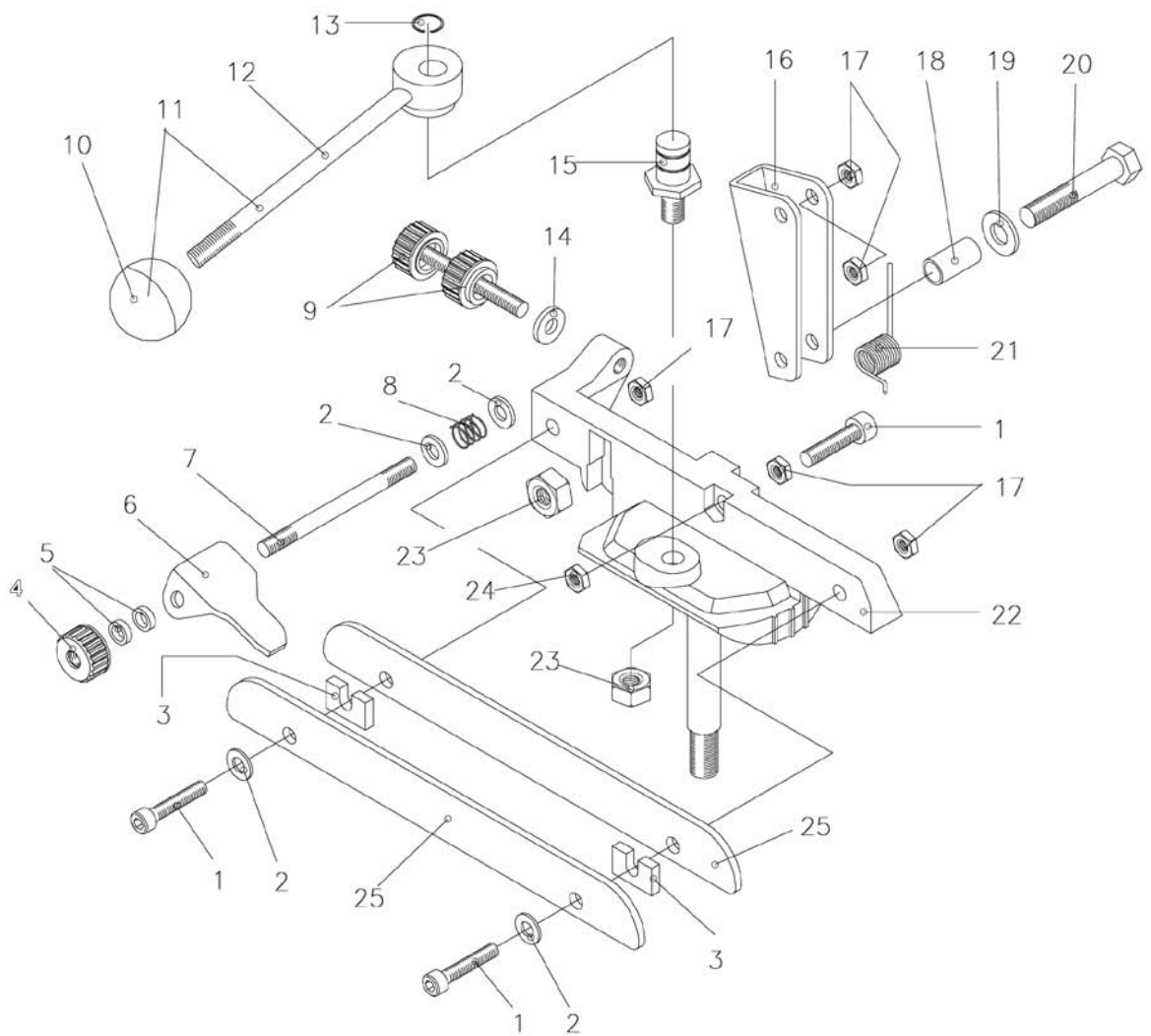
REF.	OREGON® P/N	QTY	DESCRIPTION
5	111024	1	CABLE KIT 12V C/W TERMINALS
6	108487	1	CABLE KIT C/W MOTOR COVER
7	111002	1	MOTOR COVER C/W CABLE STOP
13	108489	1	E-CARDBOARD 12V
16	111015	1	MOTOR CASE C/W HANDLE
18	111023	1	MOTOR AND FLANGE KIT 12V
19	106546	2	BUSHING
20	108484	1	SHRIM WASHER
21	108492	1	SEEGER RING UNI 7435
23	109596	1	WHEEL HOLDING FLANGE
24	106547	1	GRINDING WHEEL 105X22X3,2 (1/4"-.325"-.3/8"-.91)
24	106548	1	GRIND. WHEEL 105X22X4,7 (.3/8"-.404")
24	106549	1	GRINDING WHEEL 105X22X6,0 (depth regulator)
26	109169	1	OUTER WHEEL FIXING KNOB
28	109170	1	WHEEL PROTECT. KIT-SHIELD AND SCR.
30	108465	1	WHEEL FIXING AND TIGHTENING KIT
31	108486	1	SWING HEAD FIXING KNOB
32	108210	2	SCALE KNOB SPRING
33	108209	2	ADJUSTING SCREW
34	108485	1	COMB
35	108482	1	DOUBLE REWRN SPRING
38	108208	2	JAW
40	106543	2	SPRING
43	106544	1	BASEMENT FI-NG KNOB
44	108207	1	STOP PAWL FIXING SCREW
46	108206	1	CHAIN STOP PAWL
47	108490	1	COMPLETE BASEMENT
48	G088	1	DRESSING BRICK
49	G089	1	TEMPLATE





P/N 108340

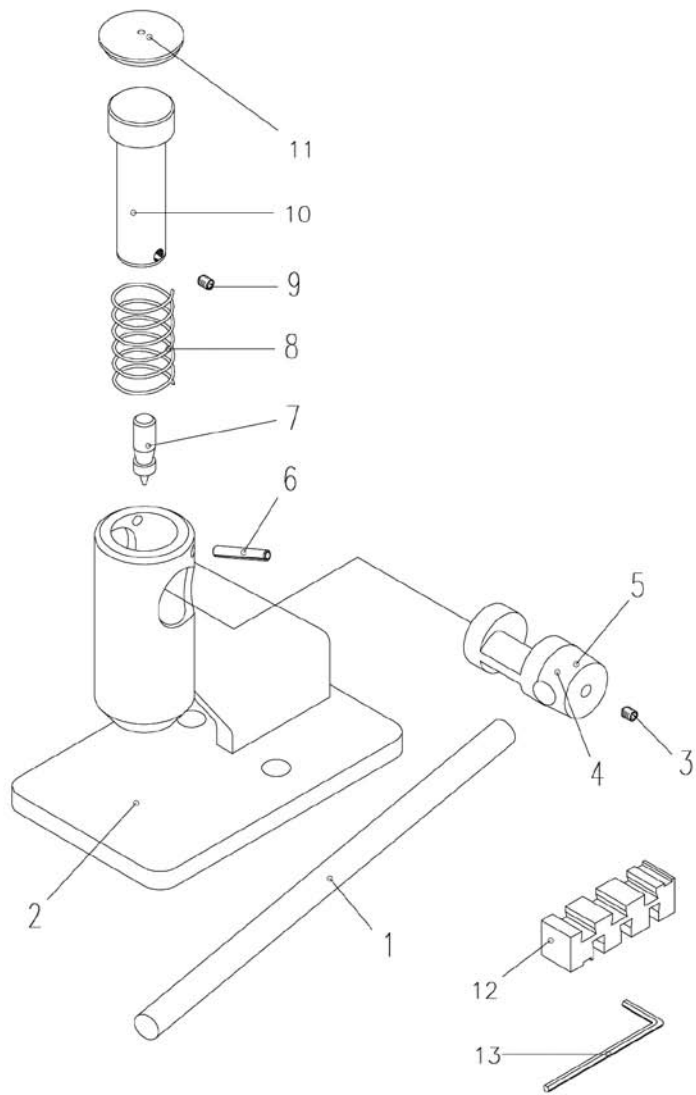
REF.	OREGON® P/N	QTY	DESCRIPTION
1	108499	1	230V ELECTRICAL SWITCH
5	111017	1	120/230V ELECTRIC CARDBOARD
8	111014	1	COVER AND HOLDING PLATE KIT
9	111025	1	CABLE KIT 230V
9	111026	1	CABLE KIT 230V CH
9	111027	1	CABLE KIT 230V AUST.
15	111015	1	MOTOR CASE C/W HANDLE
18	111018	1	MOTOR AND FLANGE KIT 230V
19	106546	2	BUSHING
20	108484	1	SHRIM WASHER
21	109290	1	SEEGER RING UNI 7435
22	109596	1	WHEEL HOLDING FLANGE
23	106547	1	GRINDING WHEEL 105X22X3,2 (1/4"-.325"-.3/8"-.91)
23	106548	1	GRIND. WHEEL 105X22X4,7 (.3/8"-.404")
23	106549	1	GRINDING WHEEL 105X22X6,0 (depth regulator)
27	109170	1	WHEEL PROTECT. KIT -SHIELD AND SCR.
29	108465	1	WHEEL FIXING AND TIGHTENING KIT
31	108486	1	SWING HEAD FIXING KNOB
32	108210	2	SCALE KNOB SPRING
33	108209	2	ADJUSTING SCREW
34	108485	1	COMB
35	108482	1	DOUBLE RETURN SPRING
40	106543	2	SPRING
43	106544	1	BASEMENT FIXING KNOB
44	108207	1	STOP PAWL FIXING SCREW
46	108206	1	CHAIN STOP PAWL
48	111019	1	CABLE KIT C/W MOTOR COVER 230V
48	111020	1	CABLE KIT C/W MOTOR COVER 230V CH
48	111021	1	CABLE KIT C/W MOTOR COVER 230V AUST.
49	G088	1	DRESSING BRICK
50	G089	1	TEMPLATE





P/N 32990

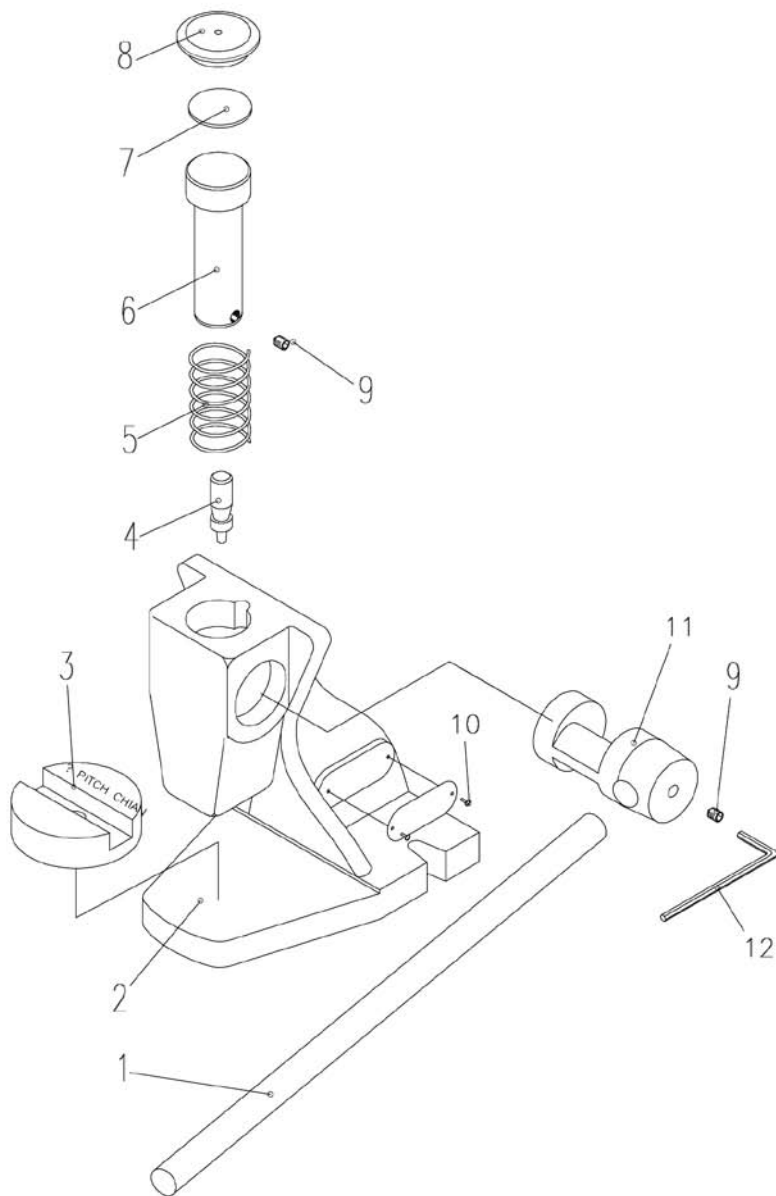
REF.	OREGON® P/N	QTY	DESCRIPTION
1	G071	3	UNI SCREW
2	G081	4	UNI WASHER
4	108503	1	ADJUSTING KNOB (BLACK)
5	35610	2	VICE SPACER KIT
6	G060	1	CHAIN STOP PAWL
7	G065	1	PAWLS HOLDING PIN
8	G059	1	PAWL SPRING
9	109244	1	PAWL ADJUSTING CIW STOP (BLACK)
12	G062	1	CAM POST
13	G063	1	STOP RING
15	G073	1	CAM HOLDING PIVOT
17	G066	5	UNI ZINC NUT





P/N 24548A

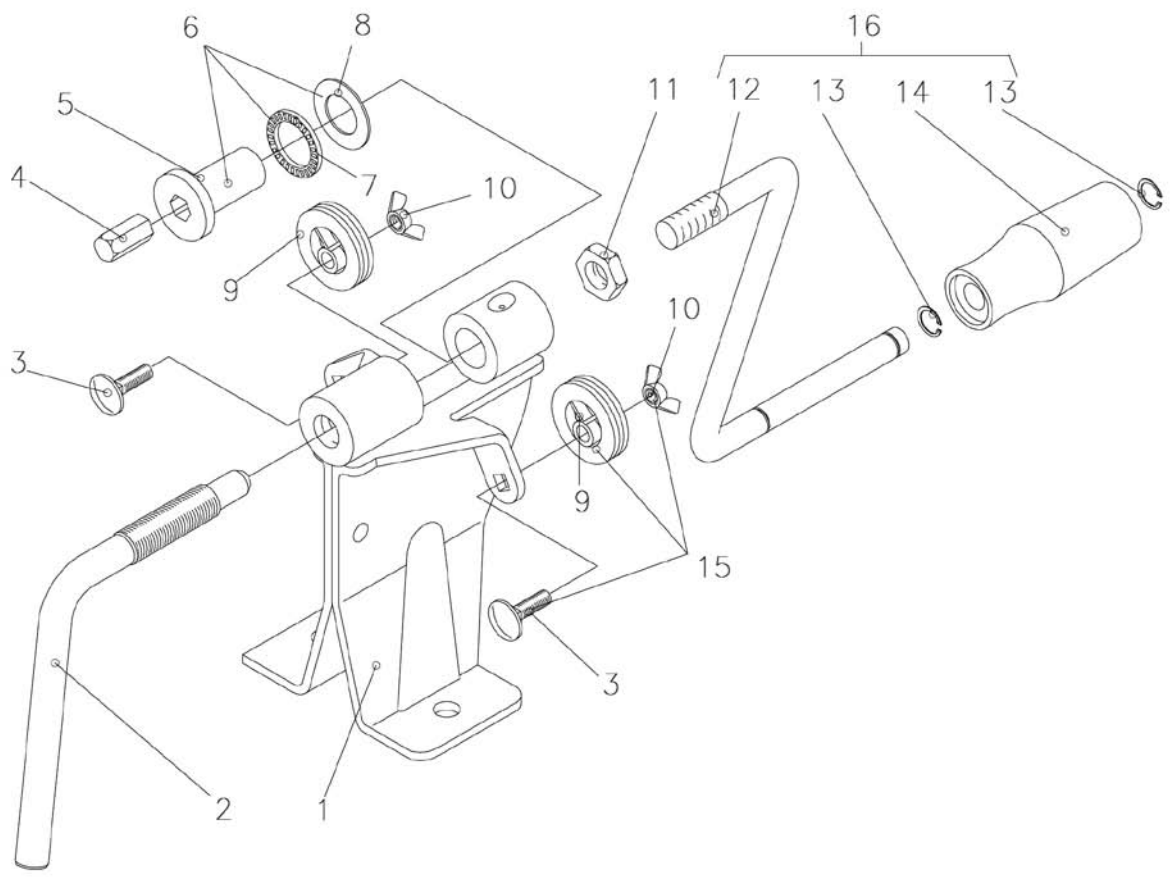
REF.	OREGON® P/N	QTY	DESCRIPTION
1	38592	1	ACTING LEVER
3	110988	1	GRUB SCREW UNI 5927 (since Dec. 2003)
7	38594	1	STANDARD PUNCH (.325", 3/8" & .404")
7	109644	1	PUNCH (1/4", 3/8"-90)
8	38593	1	RETURN SPRING
9	110998	1	GRUB SCREW UNI 5927
10	111002	1	PUNCH HOLDER
11	38595	1	CAP
12	111939	1	Anvil (1/4", .325", 3/8", .404")





P/N 109570

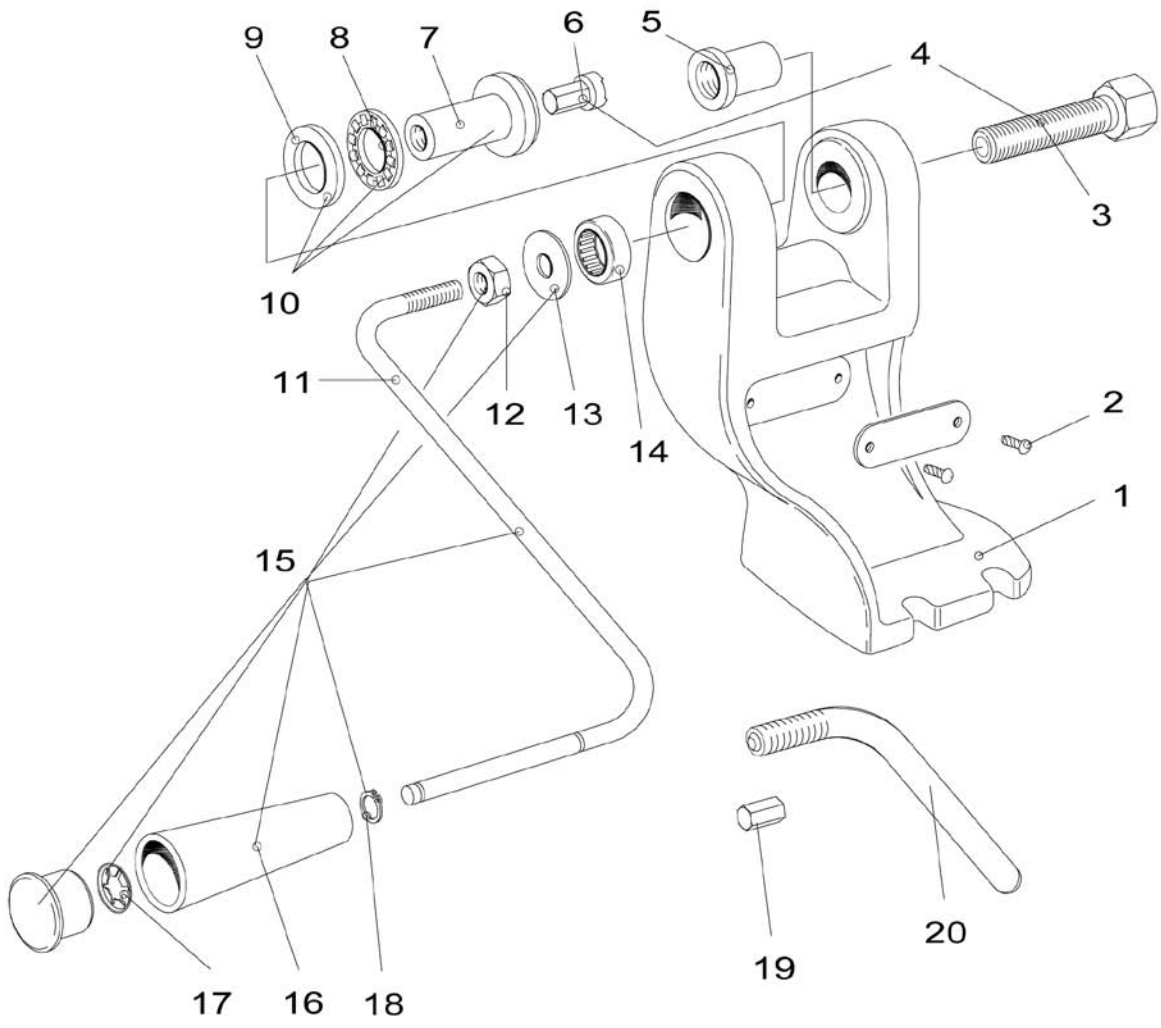
REF.	OREGON® P/N	QTY	DESCRIPTION
1	110997	1	3/4" LEVER
3	111939	1	Anvil (1/4", .325", 3/8", .404")
3	109567	1	3/4" CHAIN ANVIL
4	109566	1	3/4" PUNCH
4	38594	1	PUNCH (.325", 3/8" & .404")
4	109644	1	PUNCH (1/4", 3/8"-90)
5	111001	1	RETURN SPRING
6	111002	1	PUNCH HOLDER
7	111003	1	WASHER
8	38597	1	CAP
9	110998	2	GRUB SCREW UNI 5927
11	110999	1	CAM SHAFT





P/N 24549A

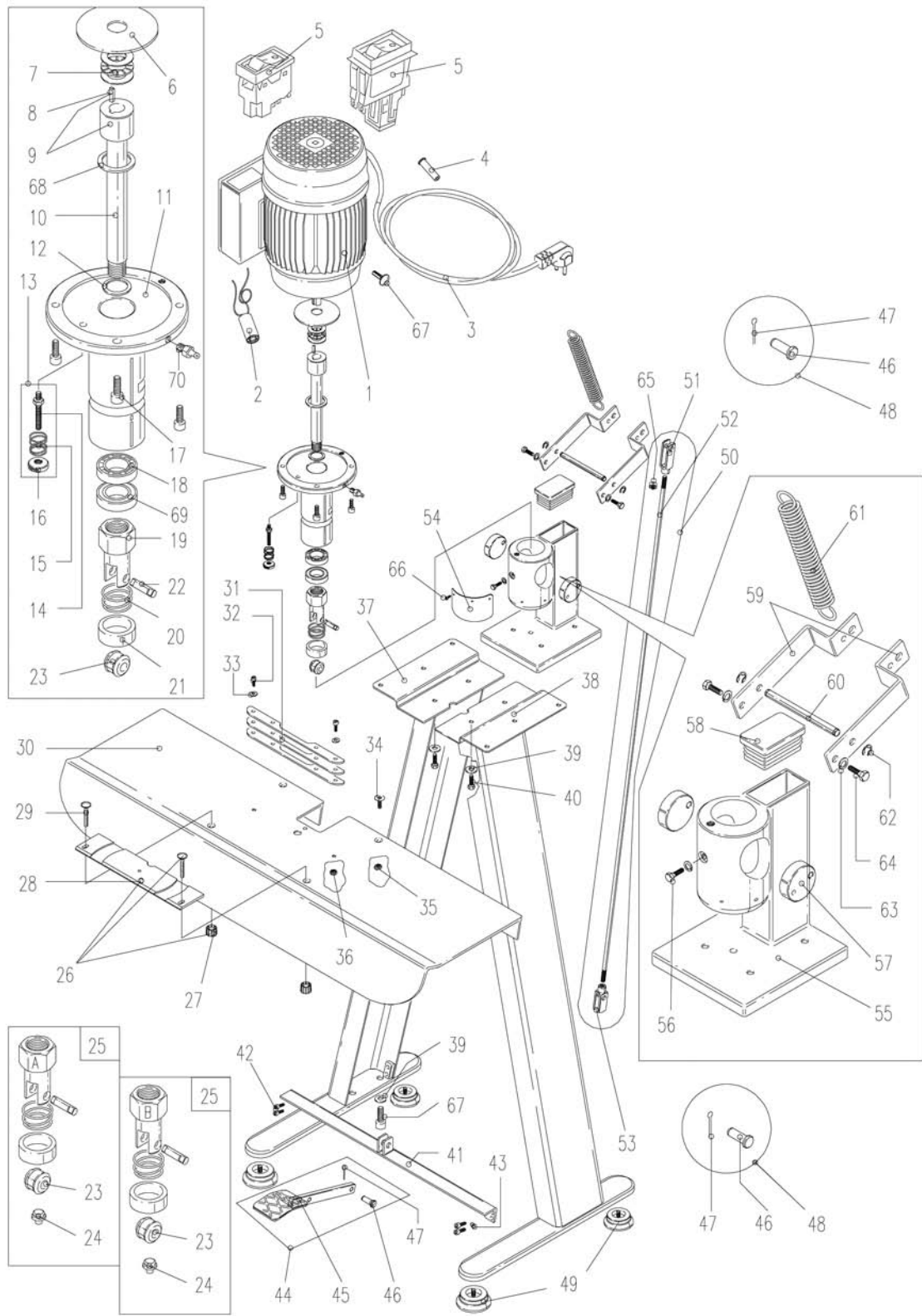
REF.	OREGON® P/N	QTY	DESCRIPTION
2	38599	1	TAKE UP HANDLE A (3/8", .404")
2	38600	1	TAKE UP HANDLE B (1/4", .325")
4	38597	1	SPINNER INSERT ANVIL (3/8", .404")
4	38598	1	SPINNER INSERT ANVIL (1/4", .325")
5	38604	1	ANVIL DRIVE
6	106369	1	BUSHING + BEARING KIT
7	38605	1	THRUST BEARING
8	38602	1	THRUST WASHER
15	38603	1	STANDARD WHEEL KIT
16	38601	1	KIT COMPLETE HANDLE





P/N 109565

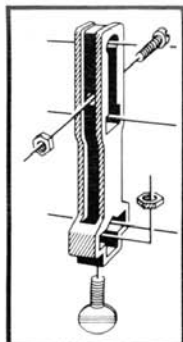
REF.	OREGON® P/N	QTY	DESCRIPTION
3	109564	1	THRUST BOLT 3/4"
5	110994	1	THREADED BUSHING
6	109563	1	ANVIL 3/4"
7	110991	1	ANVIL DRIVE BUSHING
8	110989	1	THRUST BEARING
9	110988	1	THRUST WASHER
14	110993	1	NEEDLE BEARING
15	110992	1	KIT 3/4" HANDLE
19	38598	1	SPIN INSERT B (1/4", .325")
19	38597	1	SPINNER INSERT A (3/8", .404")
20	110996	1	TAKE UP HANDLE C (1/4", .325")
20	110995	1	TAKE UP HANDLE A & B (3/8"- .404")



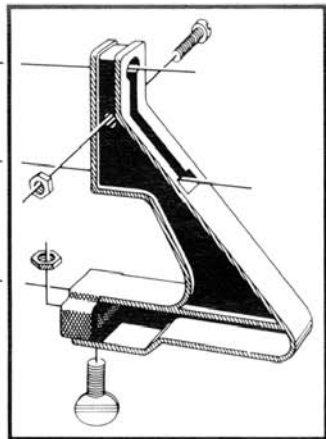
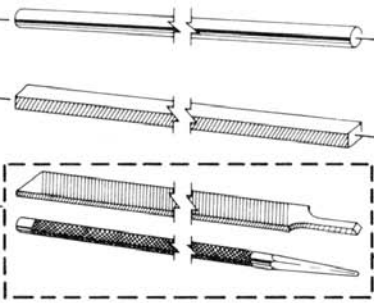


P/N 106551

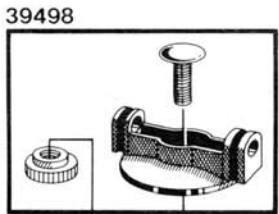
REF.	OREGON® P/N	QTY	DESCRIPTION
1	108509	1	E-MOTOR 230V
3	111033	1	ELECTRIC CABLE 230V
3	111034	1	ELECTRIC CABLE 250V - CH -
3	111035	1	ELECTRIC CABLE 230V - AUS -
5	108499	1	SWITCH EICHCOFF 230V
6	109292	1	SHIM WASHER
7	109291	1	NEEDLE BEARING
9	109289	1	SPIN SHAFT KIT
11	109288	1	E-MOTOR HOLDING FLANGE
13	109286	1	CLEARANCE ADJ. SCREW KIT
15	108210	1	SPRING FOR ADJ. SCREW
19	109284	1	ROLLS HOLDER
20	109283	1	ROLLS SPRING
21	109282	1	SHIM WASHER
22	109285	1	ROLLS PIN
24	111037	1	THRUST ANVIL (A)
24	111039	1	THRUST ANVIL (B)
25	111038	1	KIT SPINROLL-ANVIL (A)
25	111041	1	KIT SPINROLL-ANVIL (B)
26	111042	1	CHAIN GUIDE KIT
31	109280	1	JAWS KIT
32	G071	2	UNI ZINC SCREW
36	G066	2	UNI ZINC NUT
48	109278	1	KIT SPLIT PIN AND PIN
49	109279	4	ADJ. PLASTIC FOOT
50	110596	1	BAR AND YOKE KIT
55	111044	1	RIVET MASTER MAIN BODY
59	109275	2	E-MOTOR SHIFTING LEVER
60	109276	1	CAM PIN
61	109274	1	LEVER SPRING
70	111043	1	ZERK FITTING (from S/N400144 230V - S/N400159120V)



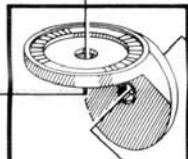
39491



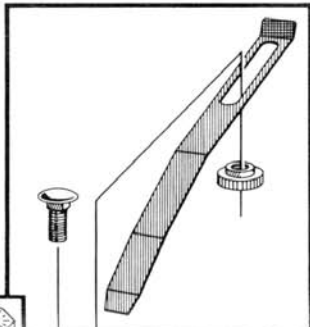
39490



39498



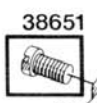
39493



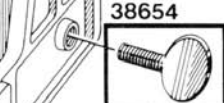
39495



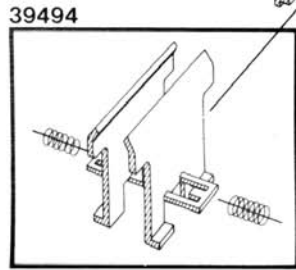
39492



38651



38654



39494



39497